

Constellation Guide

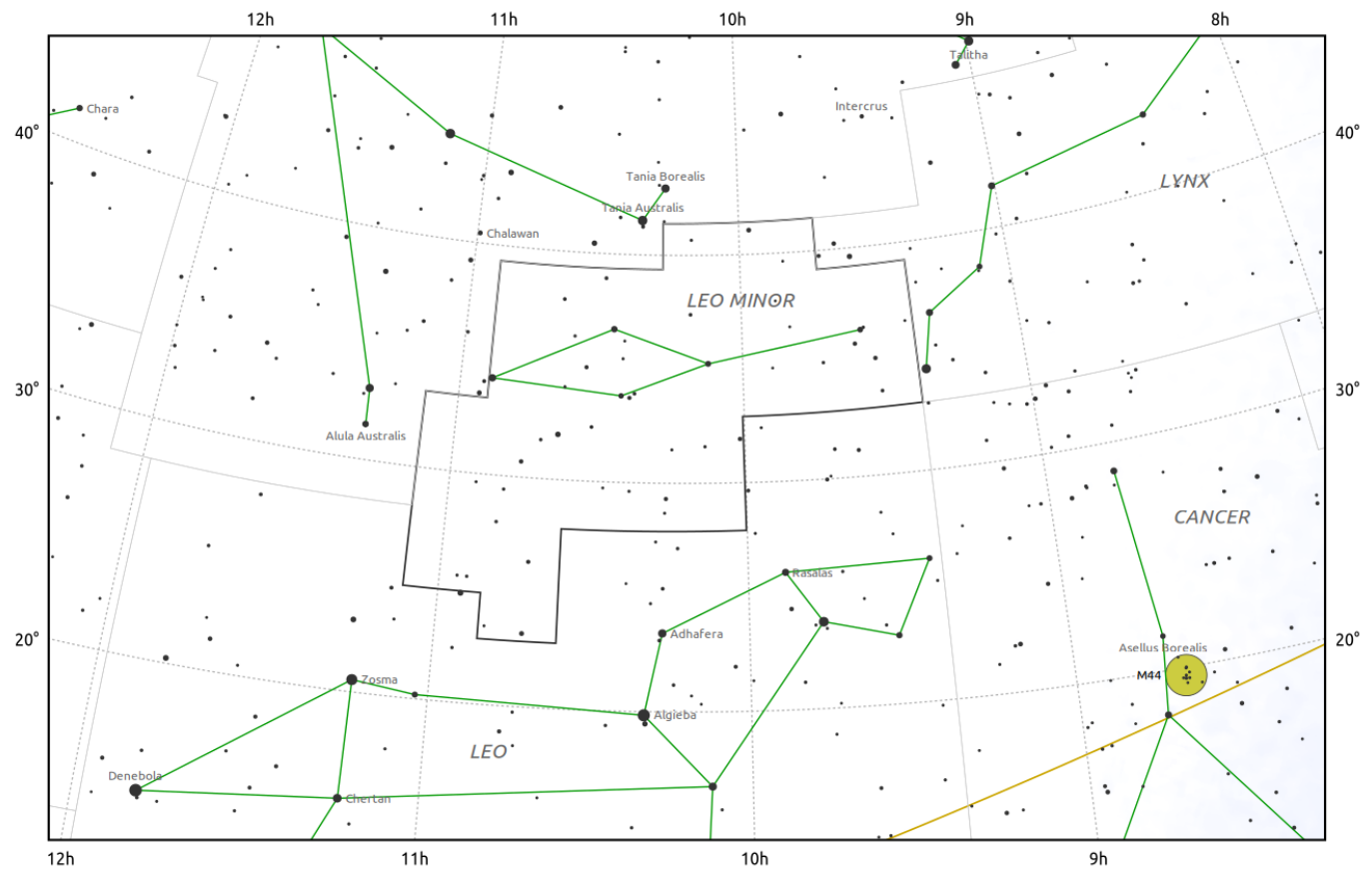
Leo Minor (LMi)

Evening Visibility: **February - April**

Online Information: [Leo Minor](#)

More Online Information: [NGC-3432](#), [NGC-3486](#), [NGC-3344](#), STAR-06, [NGC-2859](#)

[In-The-Sky.org](#) Constellation Map



© Dominic Ford 2011–2026. Downloaded from <https://in-the-sky.org>

Magnitude scale: • 6.0 • 5.0 • 4.0 • 3.0 • 2.0

— The Equator — Ecliptic Plane — Galactic Plane

● Galaxy ■ Bright nebula ● Open cluster ● Globular cluster ◆ Planetary nebula

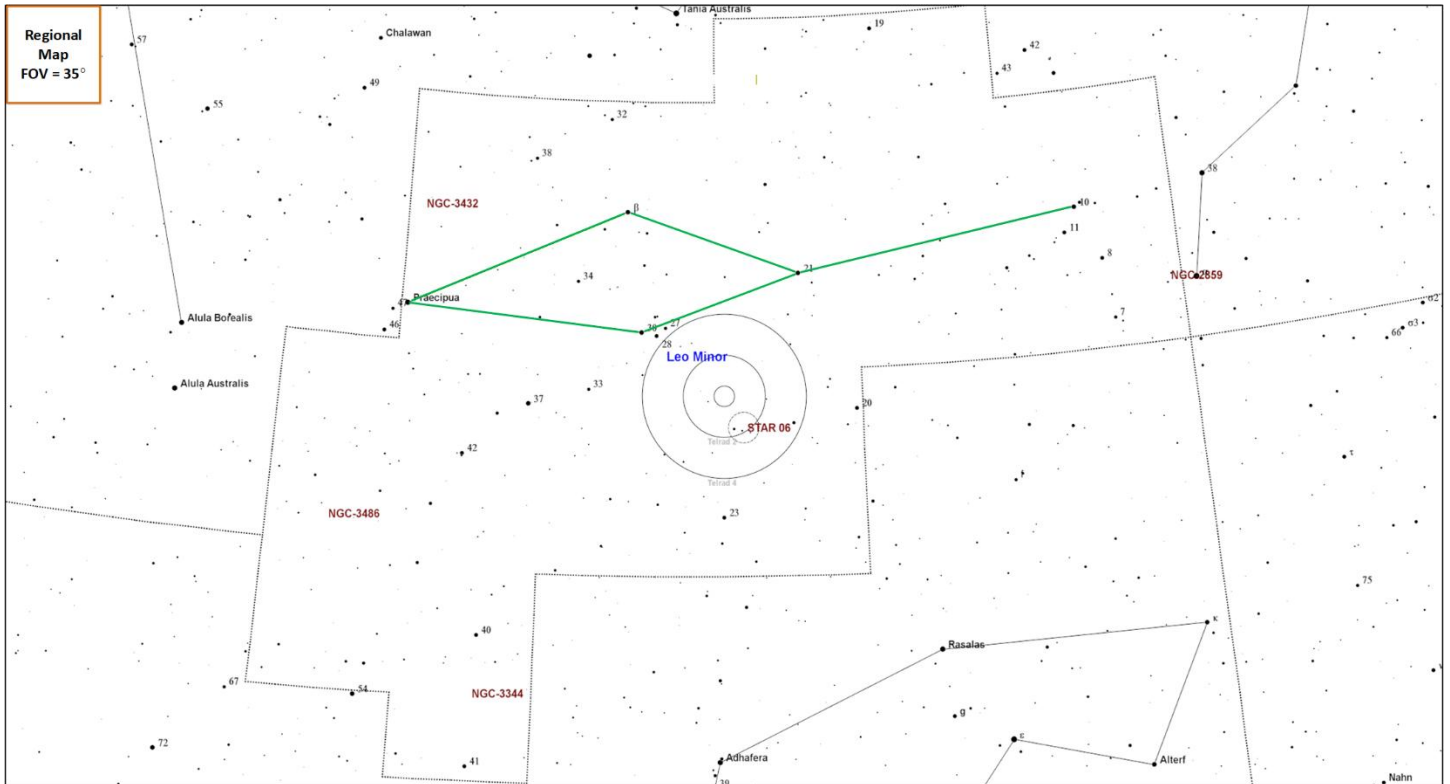
Leo Minor is a small faint constellation just north of Leo that use to be part of the Leo constellation. This constellation was introduced by the Polish astronomer Johannes Hevelius in 1687.

Constellation Highlights

- **STAR 06 (AS)** – Sailboat Cluster looks to be an interesting target for binoculars.

Constellation Guide

Constellation Targets Map

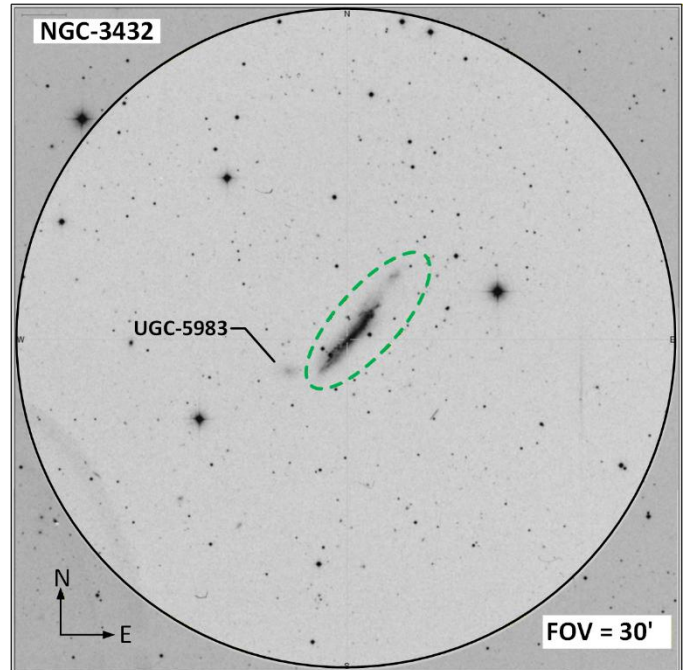
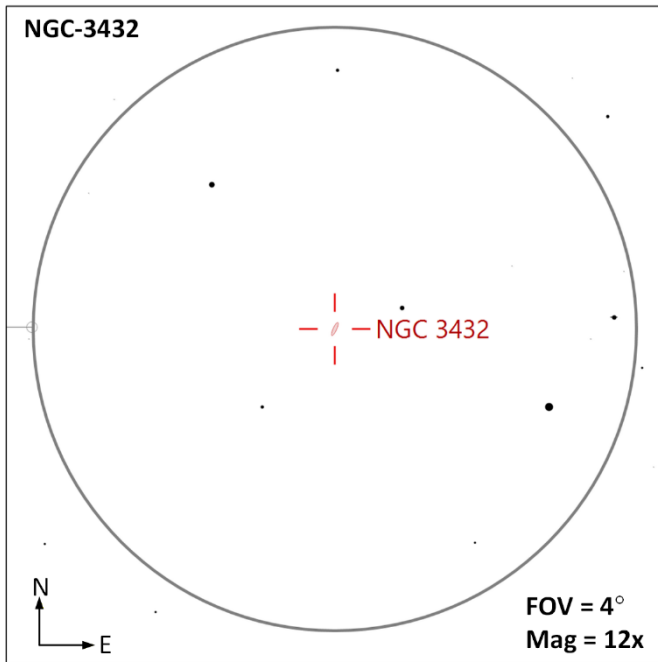


Region Objects Summary

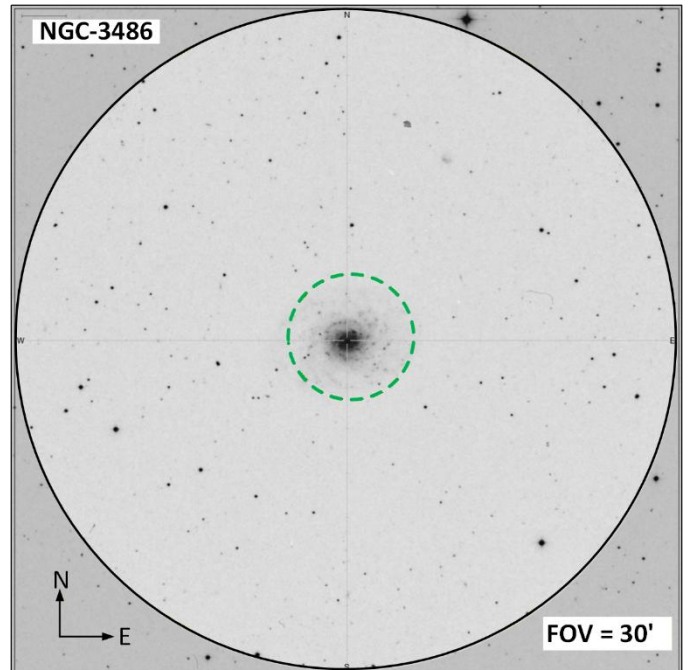
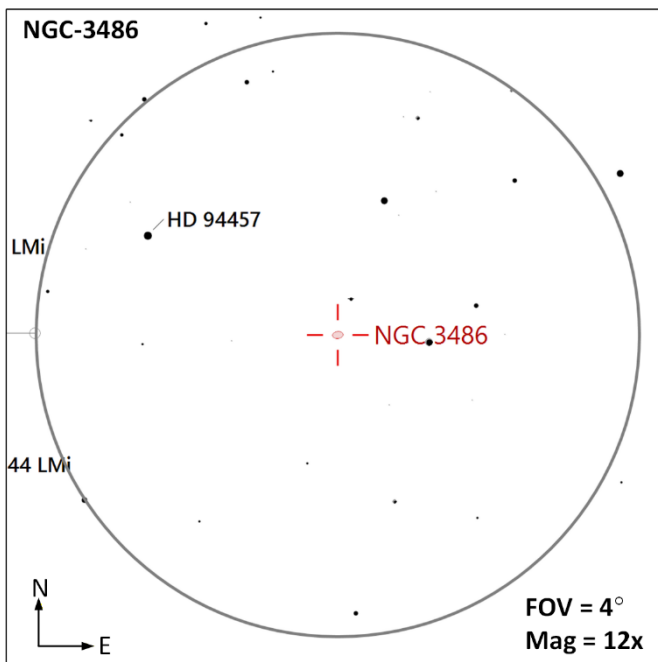
Object (Type)	Ref	Aliases	Stats
NGC-3432 (G)	<u>1</u>	UGC 5986, PGC 32643, MCG 6-24-28, Arp 206, VV 11	M=11.3 Size=6.6'x1.6' SB=22.5 MC=SB(s)m
NGC-3486 (G)	<u>1</u>	UGC 6079, PGC 33166, MCG 5-26-32	M=10.5 Size=7.1'x5.3' SB=23.1 MC=SAB(r)c
NGC-3344 (G)	<u>1</u>	UGC 5840, PGC 31968, MCG 4-25-46	M=10.5 Size=7.1' x 6.5' SB=23.3 MC=(R)SAB(r)bc
STAR-06 (AS)		Sailboat Cluster	Size=45° Stars=14 Ref Star 22 LMi, SAO-61953
NGC-2859 (G)	<u>1</u>	UGC 5001, PGC 26649, MCG 6-21-30	M=11.8 Size=4.3'x3.8' SB=23.5 MC=(R)SB(r)0+

Constellation Guide

NGC-3432 (G | M=11.3 | Size=6.6'x1.6' | SB=22.5 | MC=SB(s)m |) – This is an edge-on spiral galaxy located 40 million ly away. This galaxy is interacting with the dwarf galaxy UGC 5983 and contains tidal filaments and intense star formation.

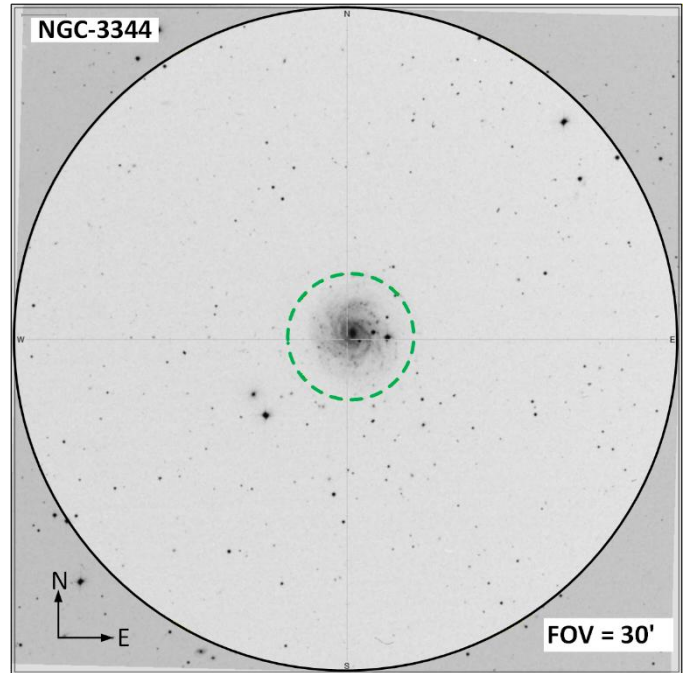
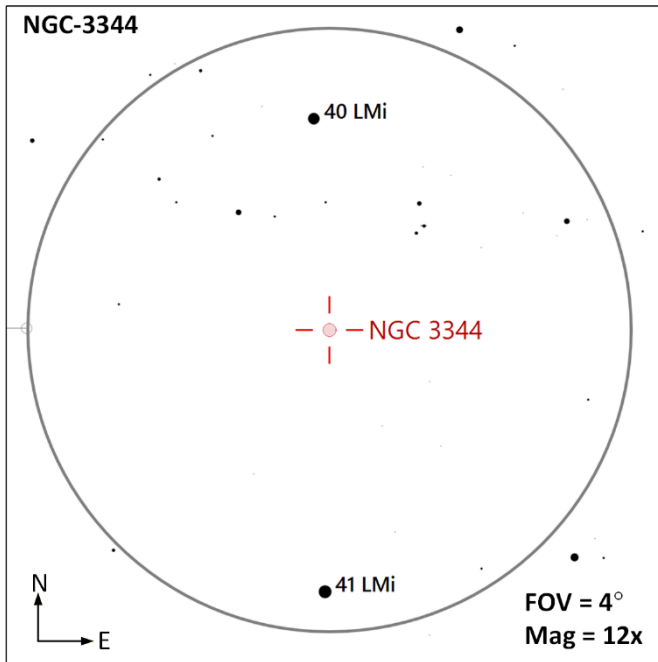


NGC 3486 (G | M=10.5 | Size=7.1'x5.3' | SB=23.1 | MC=SAB(r)c |)– This is a face-on intermediate barred spiral galaxy located 27.4 million light years away with a physical diameter of 82,383 ly. This galaxy is considered a borderline, low-luminosity [Seyfert galaxy](#) with an active nucleus.

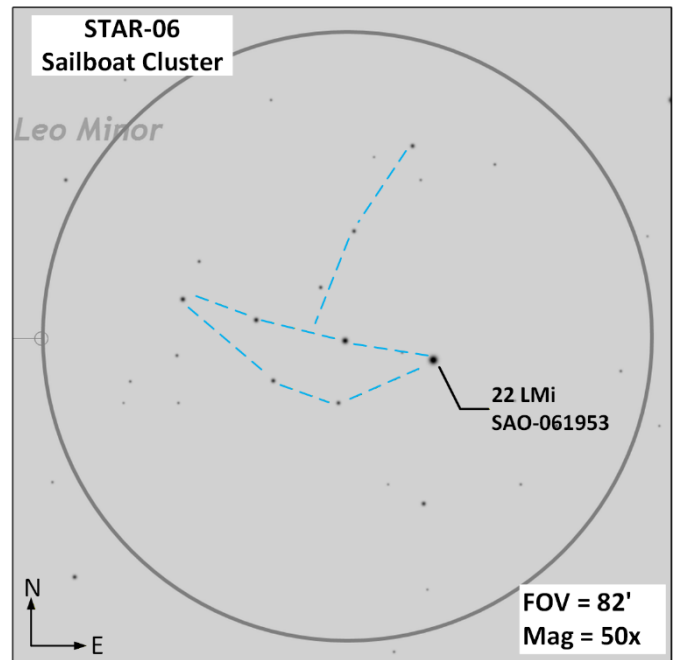
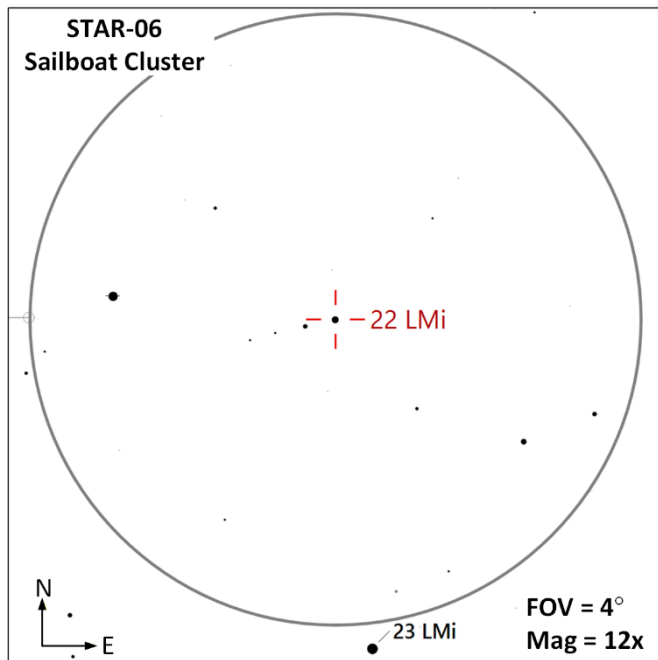


Constellation Guide

NGC 3344 (G | M=10.5 | Size=7.1' x 6.5' | SB=23.3 | MC=(R)SAB(r)bc |) – This weakly barred face-on spiral galaxy is 20 million light years from our Sun and has a physical diameter of 41,090 ly. NGC 3344 belongs to the Leo spur of galaxies, a branch of the [Virgo Supercluster](#) residing in Leo.

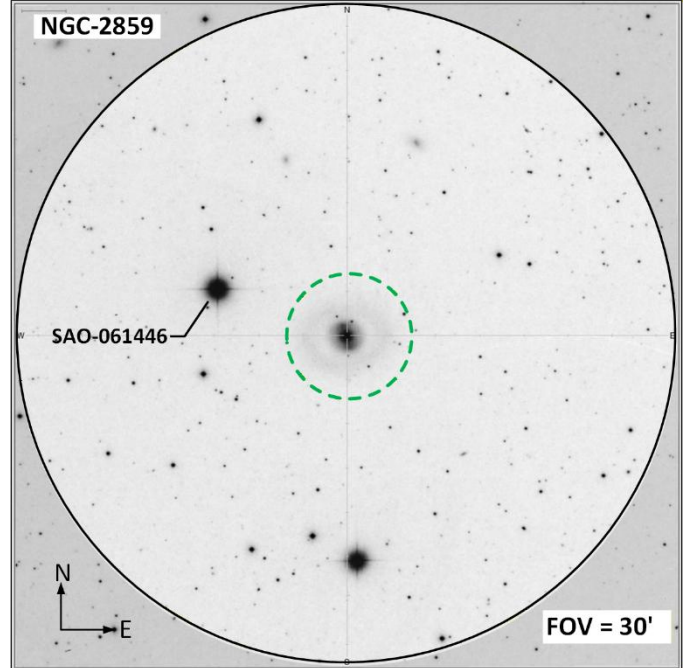
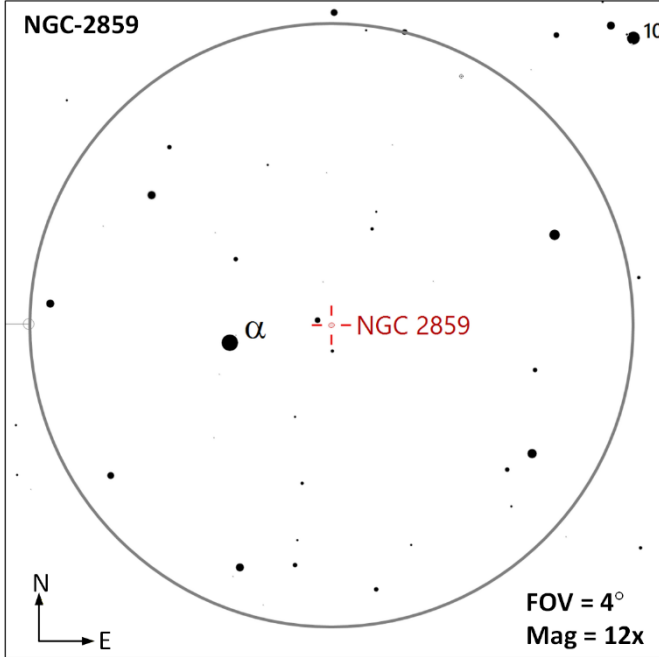


STAR-06 (AS | Size=45' | Stars=14 | Ref Star | 22 LMi, SAO-61953 |) – The Sailboat Cluster is composed of 14 blue/white stars with various magnitudes. The bright star 22 LMi is located on the stern of the boat. There are two red stars (SAO-061944, SAO-061951) located on the mask of the boat.



Constellation Guide

NGC-2859 (G | M=11.8 | Size=4.3'x3.8' | SB=23.5 | MC=(R)SB(r)0+ |) – This is a [barred lenticular galaxy](#) (an intermediate between a barred and elliptical galaxy) located 83 ly away with a physical diameter of 110,852 light years. While the galaxy may not show much details it should be pretty easy to find since it is quite close to Alpha Lyncis. A faint ring around the central core may be visible in large telescopes.



Constellation Guide

Blank

Constellation Guide

Observation Log: Leo Minor (LMi)

Equipment Config A: _____ **Config B:** _____

Notes: _____

Date	Time	Config	Target	Notes

Date	Time	Config	Target	Notes

Constellation Guide

Observation Log: Leo Minor (LMi)

Equipment Config A: _____ **Config B:** _____

Notes: _____

Date	Time	Config	Target	Notes

Date	Time	Config	Target	Notes

Constellation Guide

References, Resources and Tools used to create this document

The resources listed below were utilized to generate this document.

References

- Books
 - [Objects in the Heavens](#): Peter Birren
 - [Touring the Universe through Binoculars](#): Philip Harrington
 - [The Deep Sky](#): Philip Harrington
 - [Double and Multiple Stars and How to Observe Them](#): James Mullaney
 - Celestial Portraits: [Tom Polakis](#)
 - [Sky Spot](#) Books
 - Bright Telescopic Objects: Brent Watson
 - Select Double Stars: Brent Watson
 - Overlooked Objects: Bret Watson
- Asterisms
 - Astronomical League: [Asterisms observing program](#) List
 - Asterisms: Demeiza Ramakers
 - [Pattern Asterisms](#): John Chiravalle
 - Milwaukee Astronomical Society: [Binocular Asterisms](#)
 - Deep-Sky.co.uk: [Observing Asterisms](#) (David Ratlege)
- [Saguaro Astronomy Club](#)
 - Asterisms List
 - [110 Best of the NGC](#)
 - Red Stars List
- Online
 - [Wikipedia](#)
 - The Garden Astronomer: [Double, Multiple, and Special Star Observations List](#)
 - Sky & Telescope: [Colored Double Stars, Real and Imagined](#)
 - [In-The-Sky.org](#)
 - [Constellation-guide.com](#)
 - [NASA/IPAC Extragalactic Database](#)

Applications

- [SkyTools](#) 4.1 Visual Professional
- [AstroPlanner](#) Version 2.4
- [Cartes du Ciel](#) Version 4.3
- [Sky Safari](#) Pro 7
- Microsoft Office Home and business 2021 - Word
- Microsoft Visio Professional 2021
- [IrfanView](#) Version 4.72