

Constellation Guide

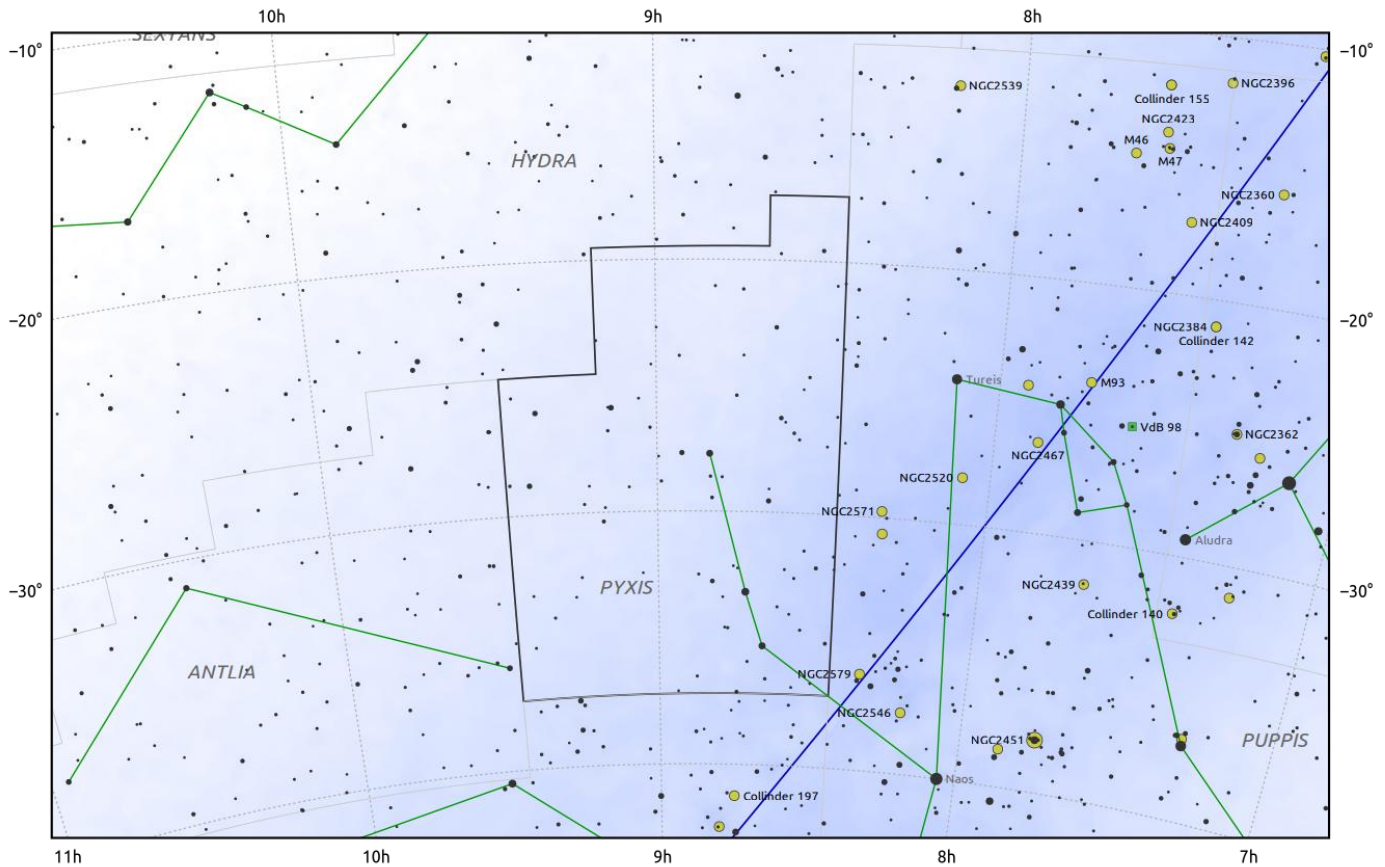
Pyxis (Pyx)

Evening Visibility: **January - March**

Online Information: [Pyxis](#)

More Online Information: [NGC-2613](#), [NGC-2627](#), [NGC-2818A](#), [NGC-2818](#)

[In-The-Sky.org](#) Constellation Map



Magnitude scale: -7.0 • -6.0 • -5.0 • -4.0 • -3.0 • -2.0 • -1.0

— The Equator — Ecliptic Plane — Galactic Plane

● Galaxy ■ Bright nebula ● Open cluster ● Globular cluster ◆ Planetary nebula

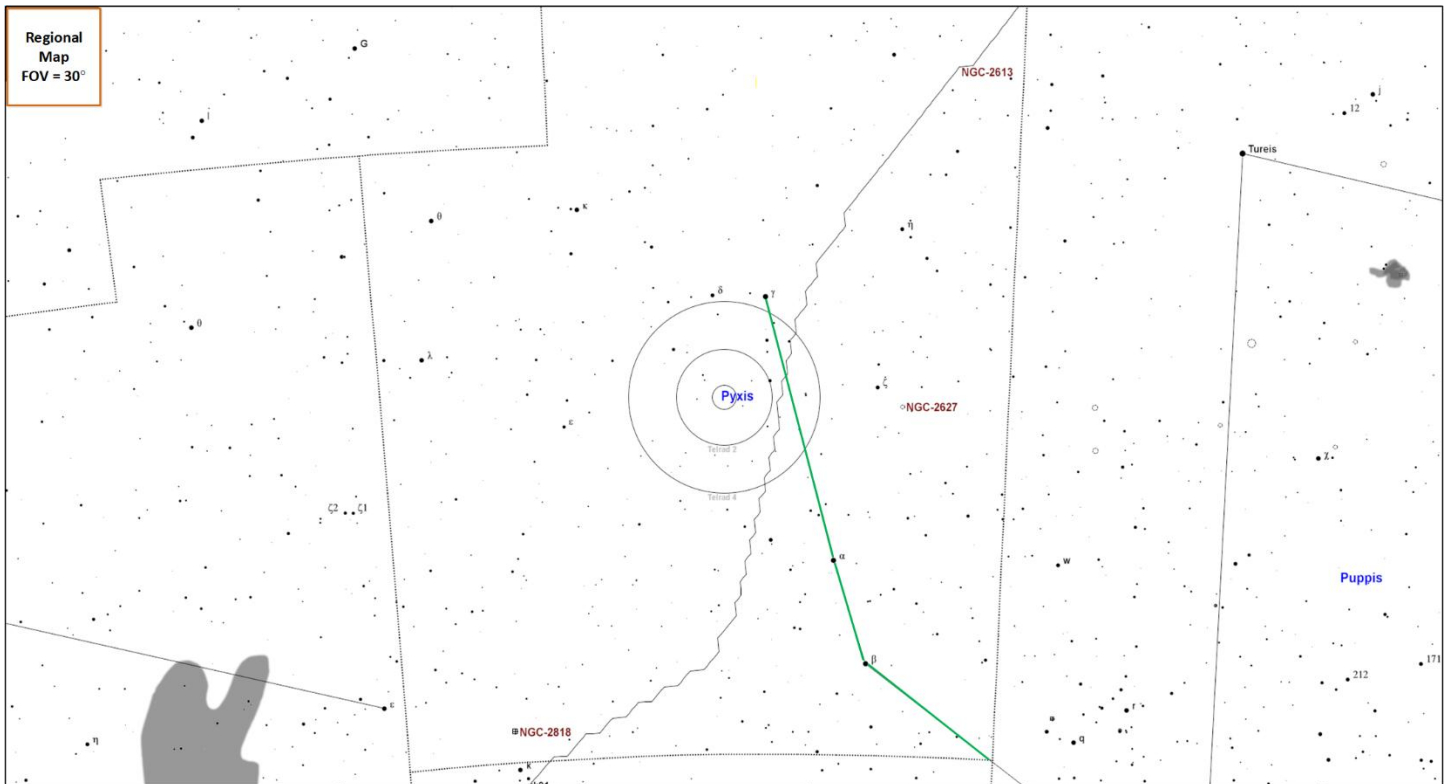
Pyxis represents a mariner's compass and is the smallest of the four parts into which the ancient ship constellation of Argo Narvis, was divided into in the 1750's by the astronomer Nicolas Louis de Lacaille. This is a dim and southerly constellation visible at latitudes between $+50^\circ$ and -90° . This constellation has no named stars, no messier objects and not significant multiple star systems but does contain some deep sky objects

Constellation Guide

Constellation Highlights

- **NGC-2613 (G)** – Edge-on spiral galaxy.
- **NGC-2627 (OC)** – Binocular and telescope Open Cluster.
- **NGC-2818A, NGC-2818 (OC, PN)** – Open cluster and planetary nebula.

Constellation Targets Map

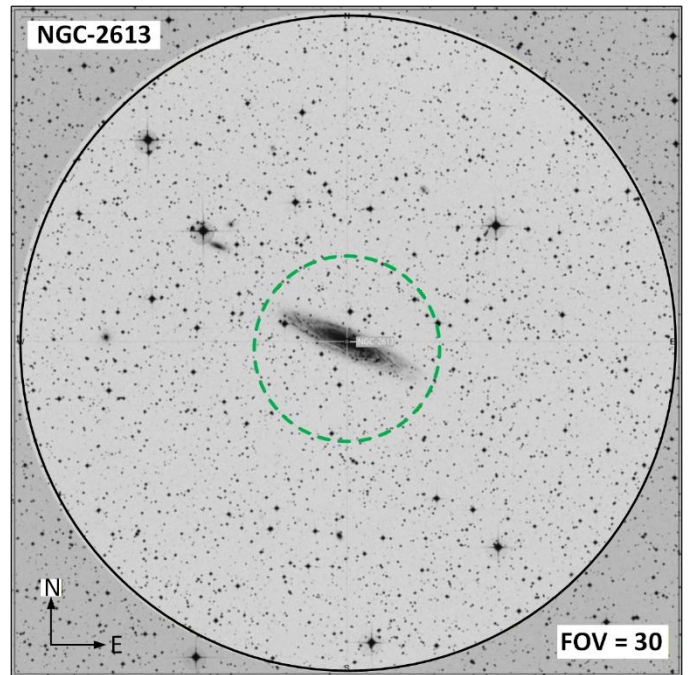
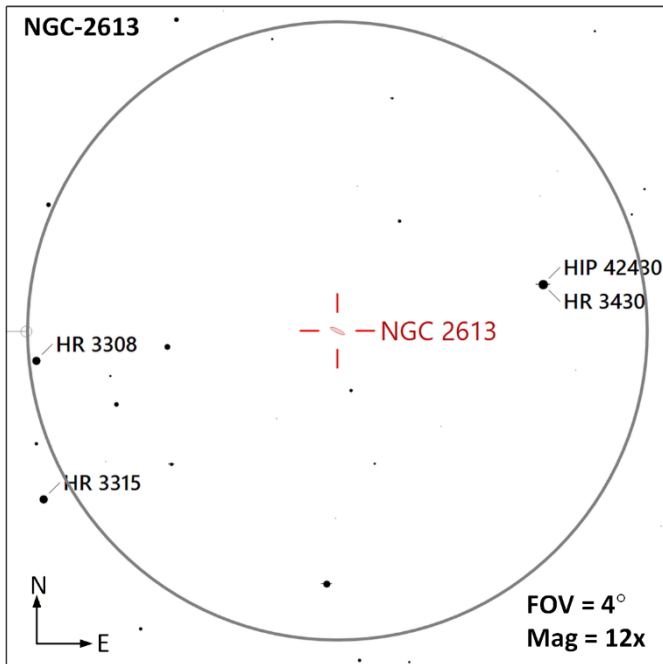


Region Objects Summary

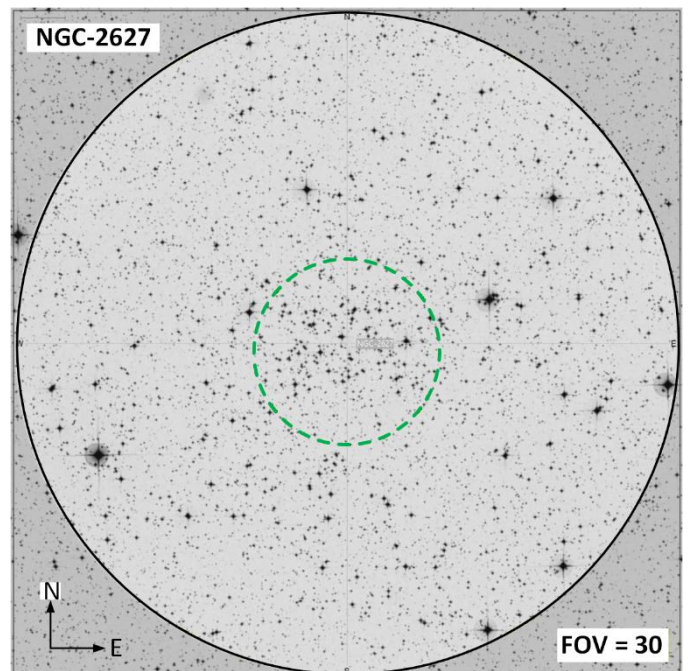
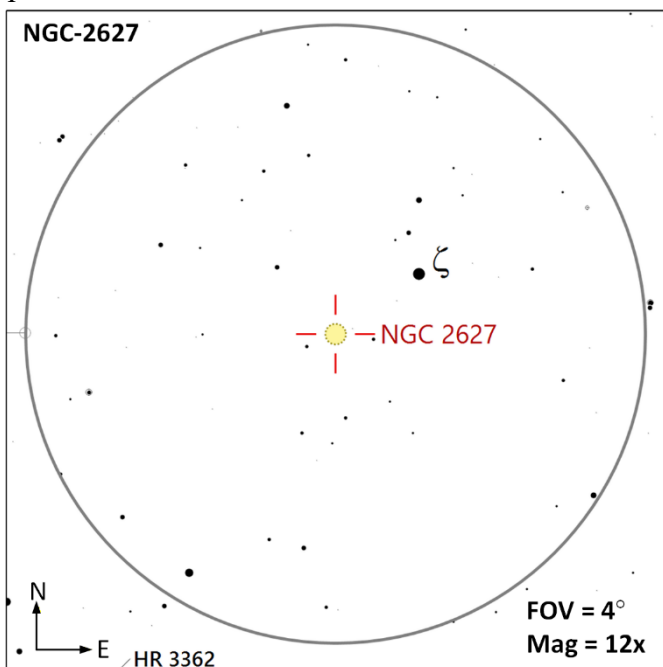
Object (Type)	Ref	Aliases	Stats
NGC-2613 (G)	1	UGCA 141, PGC 23997, MCG -4-21-3	M=11.6 Size=7.6'x1.7' SB=23.0
NGC-2627 (OC)	1	Collinder 188, Cr-188, Mel 87	M=8.4 Size=11.0' SB=22.2 Stars40+
NGC-2818A (OC)	1	Collinder 206, Cr206, Mel96, Lund497, OCL743	M=8.2 Size=9' SB=21.6 Stars= 30+
NGC-2818 (PN)	1	PLN 261+8.1 ESO 372-PN13	M=8.2 Size=2' SB=20.3

Constellation Guide

NGC-2613 (G | M=11.6 | Size=7.6'x1.7' | SB=23.0 |) – A edge-on spiral galaxy visible in telescopes with 4" or greater aperture as a spindle-shape. This galaxy is 78 million light years from earth and has a morphological classification of SA(s)b and a combined mass of 750 billion solar masses.

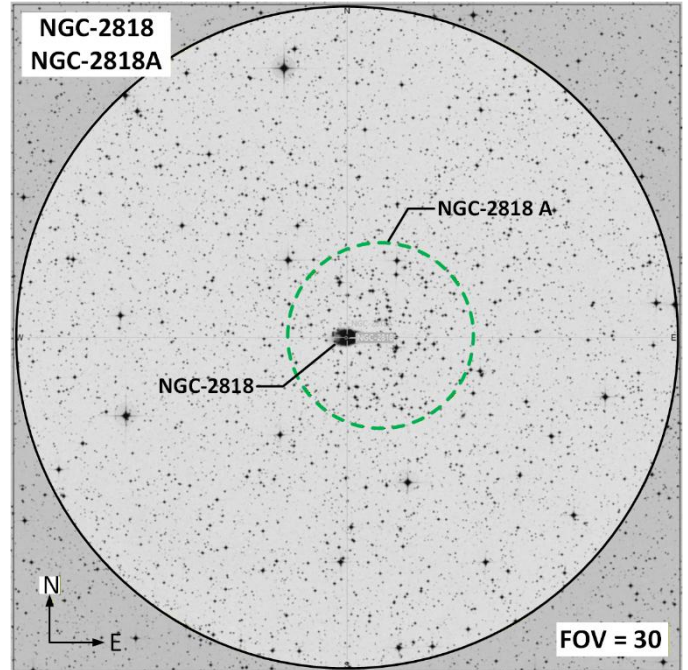
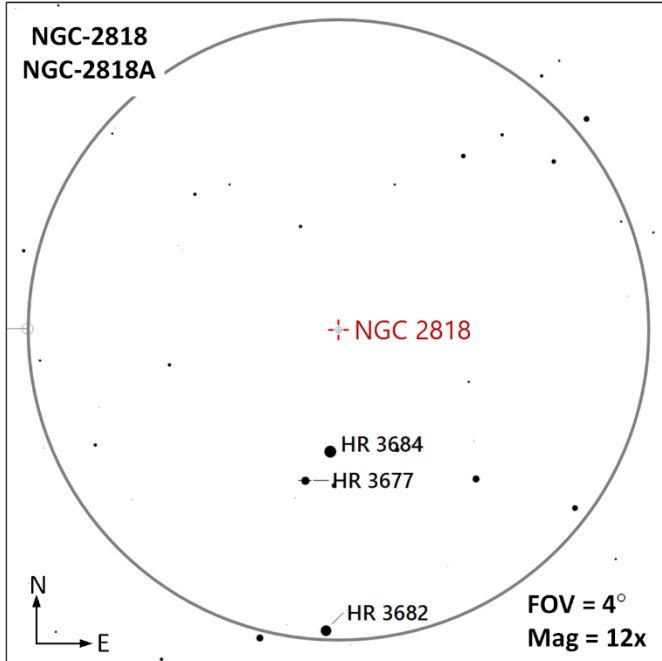


NGC-2627 (OC | M=8.4 | Size=11.0' | SB=22.2 |) – This open cluster appears as a grouping of about 15 stars in binoculars while approximately 40 stars are visible in a modest size telescope. This open cluster is located 5,990 ly from our sun and has a Trumpler Classification of III 2m indicating it is generally average in appearance with no noticeable concentration of stars.

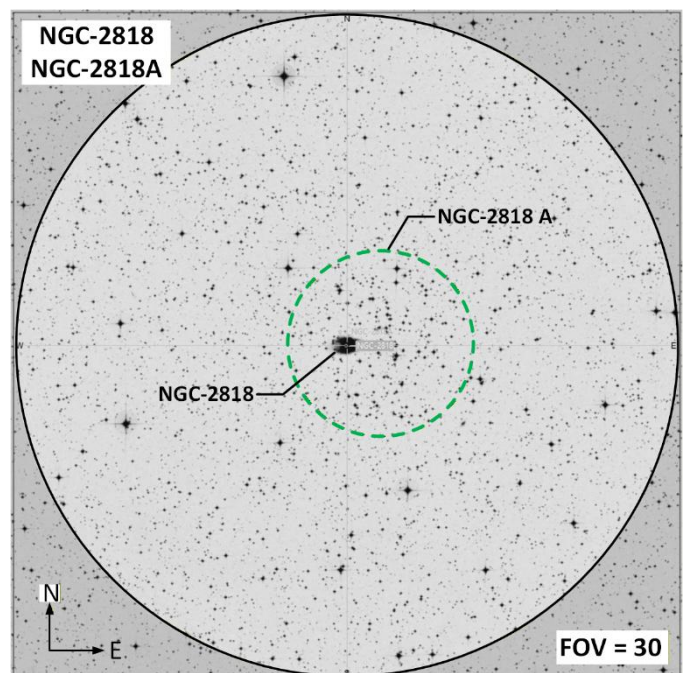
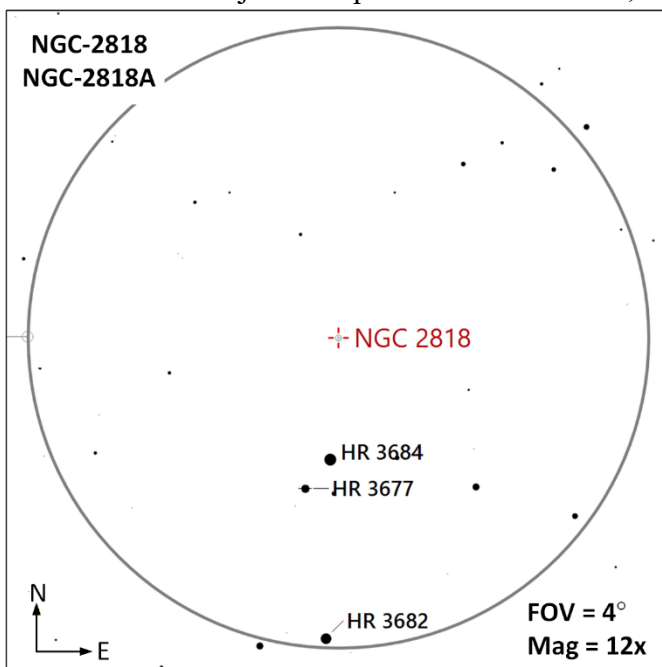


Constellation Guide

NGC-2818A (OC | M=8.2 | Size=9' | SB=21.6 | Stars= 30+ |) – Open cluster with approximately 30 stars ranging from 12th to 13th magnitude. The cluster is approximately 6,400 ly from earth. A chain of stars ten stars run along the eastern edge of the cluster. The planetary nebula NGC-2818 is associated with this cluster. References for these two objects can be bit confusing since they are both discussed in the same conversation and not called out separately.



NGC-2818 (PN AB | M=4.1, 6.0 | Sep=31" | PA=308° |) – This planetary nebula is associated with the open cluster NGC-2818A and is a [bipolar nebula](#). Meaning it is a planetary nebula with two lobes on either side of the central star. This object is expected to be about 11,000 years old.



Constellation Guide
Observation Log: Pyxis (Pyx)

Equipment Config A: _____ **Config B:** _____

Notes: _____

Date	Time	Config	Target	Notes

Date	Time	Config	Target	Notes

Constellation Guide
Observation Log: Pyxis (Pyx)

Equipment Config A: _____ **Config B:** _____

Notes: _____

Date	Time	Config	Target	Notes

Date	Time	Config	Target	Notes

Constellation Guide

References, Resources and Tools used to create this document

The resources listed below were utilized to generate this document.

References

- Books
 - [Objects in the Heavens](#): Peter Birren
 - [Touring the Universe through Binoculars](#): Philip Harrington
 - [The Deep Sky](#): Philip Harrington
 - [Double and Multiple Stars and How to Observe Them](#): James Mullaney
 - Celestial Portraits: [Tom Polakis](#)
 - [Sky Spot](#) Books
 - Bright Telescopic Objects: Brent Watson
 - Select Double Stars: Brent Watson
 - Overlooked Objects: Bret Watson
- Asterisms
 - Astronomical League: [Asterisms observing program](#) List
 - Asterisms: Demeiza Ramakers
 - [Pattern Asterisms](#): John Chiravalle
 - Milwaukee Astronomical Society: [Binocular Asterisms](#)
 - Deep-Sky.co.uk: [Observing Asterisms](#) (David Ratlege)
- [Saguaro Astronomy Club](#)
 - Asterisms List
 - [110 Best of the NGC](#)
 - Red Stars List
- Online
 - [Wikipedia](#)
 - The Garden Astronomer: [Double, Multiple, and Special Star Observations List](#)
 - Sky & Telescope: [Colored Double Stars, Real and Imagined](#)
 - [In-The-Sky.org](#)
 - [Constellation-guide.com](#)

Applications

- [SkyTools](#) 4.1 Visual Professional
- [AstroPlanner](#) Version 2.4
- [Cartes du Ciel](#) Version 4.3
- [Sky Safari](#) Pro 7
- Microsoft Office Home and business 2021 - Word
- Microsoft Visio Professional 2021
- [IrfanView](#) Version 4.72