

Constellation Guide

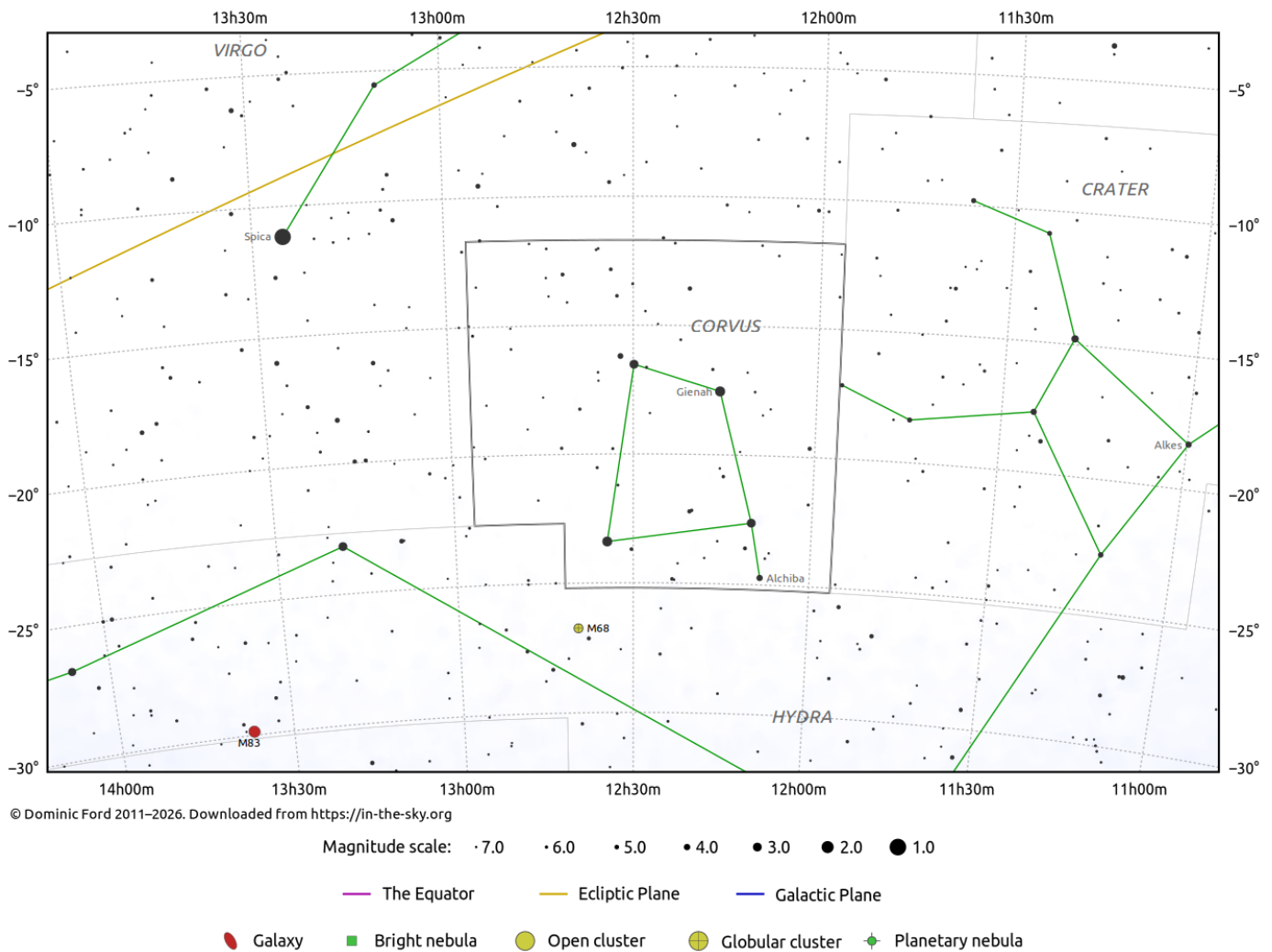
Corvus (Crv)

Evening Visibility: **March - May**

Online Information: [Corvus](#)

More Online Information: [NGC-4782](#), NGC 4783, 58 Corvi, STAR 20, HD-109556, [Algorab](#), [NGC-4361](#), [The Antennae](#)

[In-The-Sky.org](#) Constellation Map



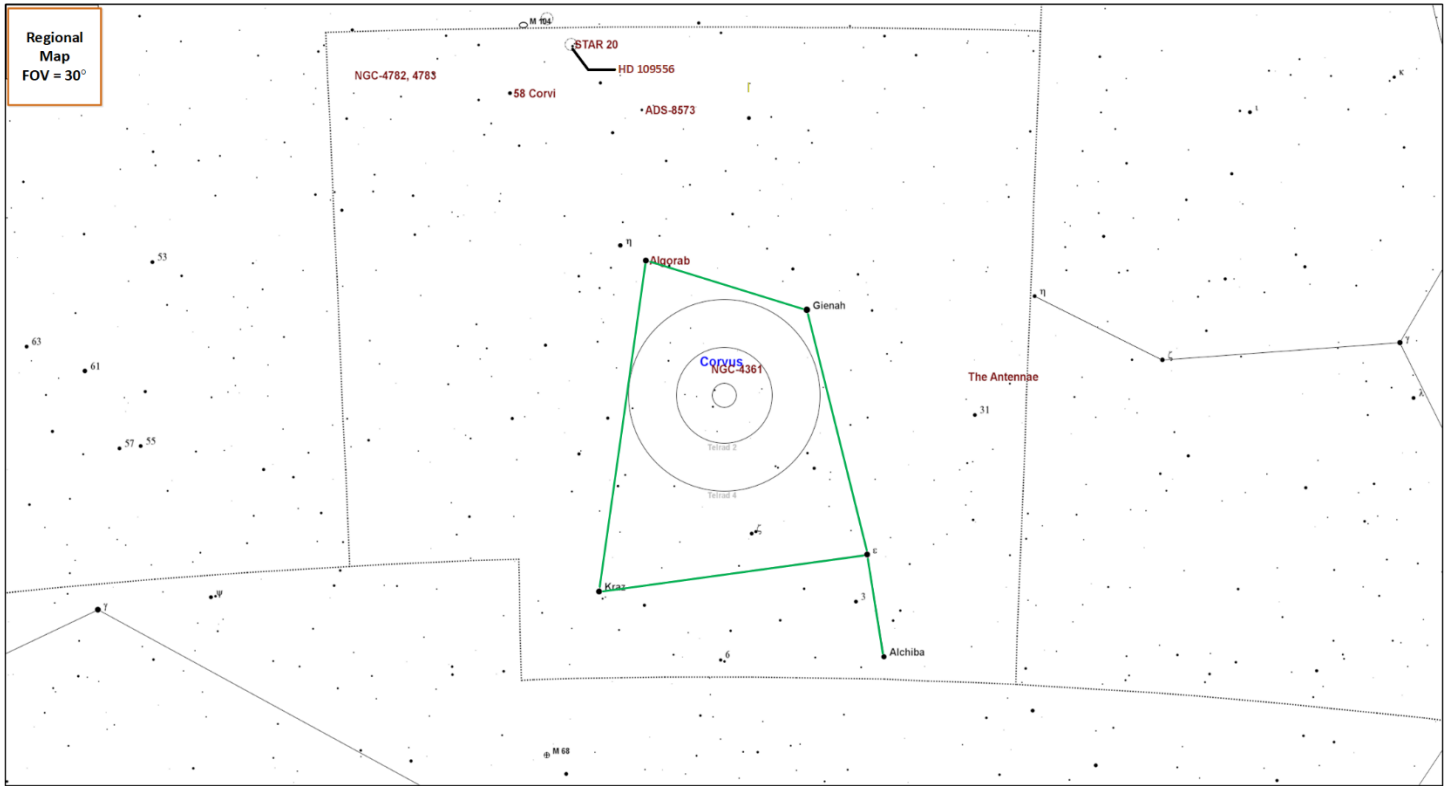
There are a couple of stories from the ancient Greeks about Corvus (The Crow/Raven) one is detailed in the Crater constellation, another story tells of how the crow was initially snow white and brought the news that one of [Apollo](#)'s lovers, [Coronis](#) had been unfaithful to him. In his anger Apollo turned the crow black.

Constellation Guide

Constellation Highlights

- **58 Corvi (MS-4)** – Four component multiple star system.
- **STAR 20 (AS)** – Known as the Stargate best seen in a telescope.
- **Algorab (DS)** – Colorful double star system.
- **The Antennae (G)** – Colliding Galaxies Caldwell 60 & 61.

Constellation Targets Map



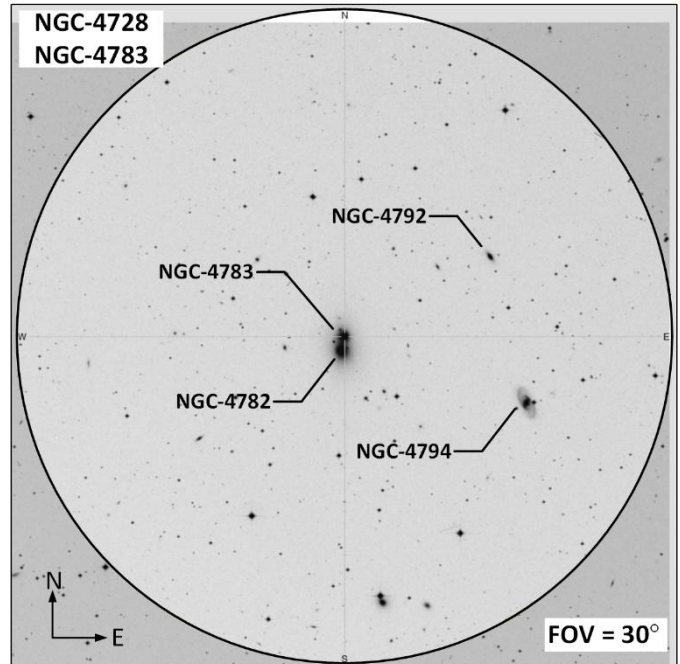
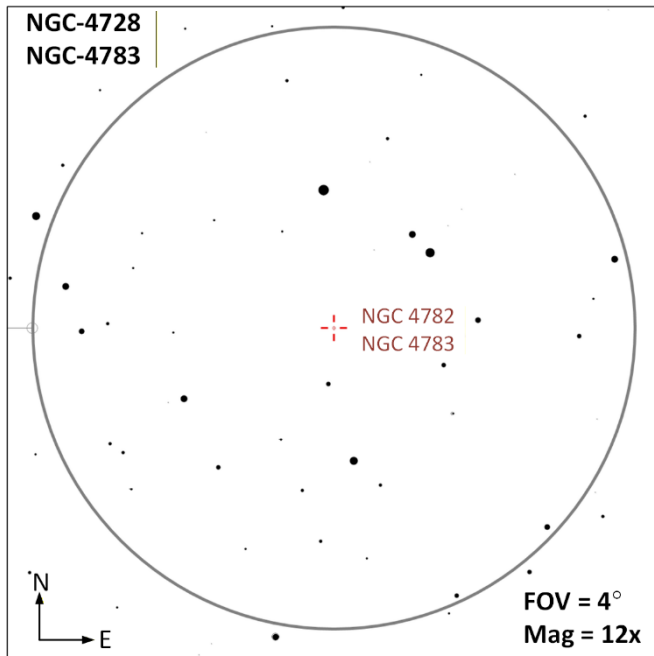
Region Objects Summary

Object (Type)	Ref	Aliases	Stats
NGC-4782, 4783 (G)	<u>1</u>	Holm 485, VV 201 PGC 43924, MCG -2-33-50, VV201 PGC 43926, MCG -2-33-51, VV201	M=11.7 Size=1.5' SB=21.2 MC=E1 M=11.8 Size=1.7' SB=21.6 MC=E0
58 Corvi (MS-4)	<u>1</u>	SAO-157448, HIP 612910, HR 4822, HD 110318, VV Corvi, STF 1559, ADS 8627	AB M=5.9, 5.9 Sep=5.3" PA=314° MC=F5V, F5V AC M=5.9, 10.3 Sep=46" PA=228° MC=F3Vn AD M=5.9, 10.3 Sep=59" PA=229° MC= F3Vn
STAR 20 (AS)		Stargate	Stars=6 Size=15' Ref Star: STF-1659, SAO-157379, HIP 61449

Constellation Guide

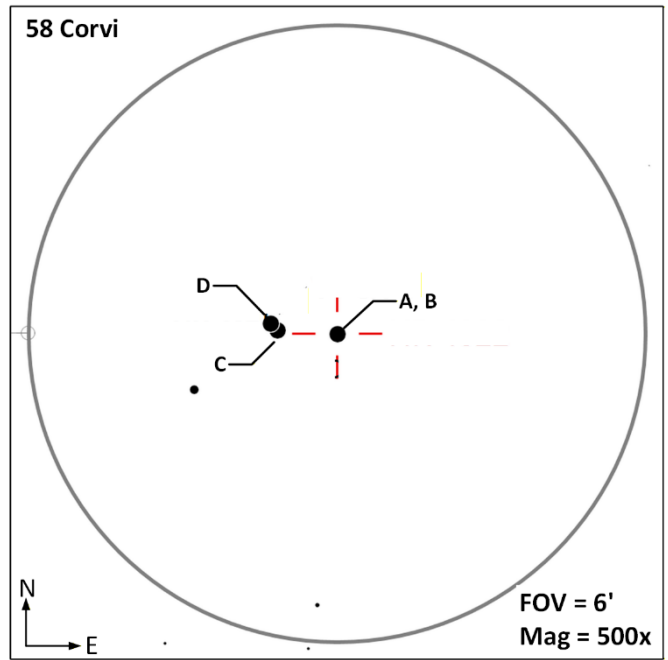
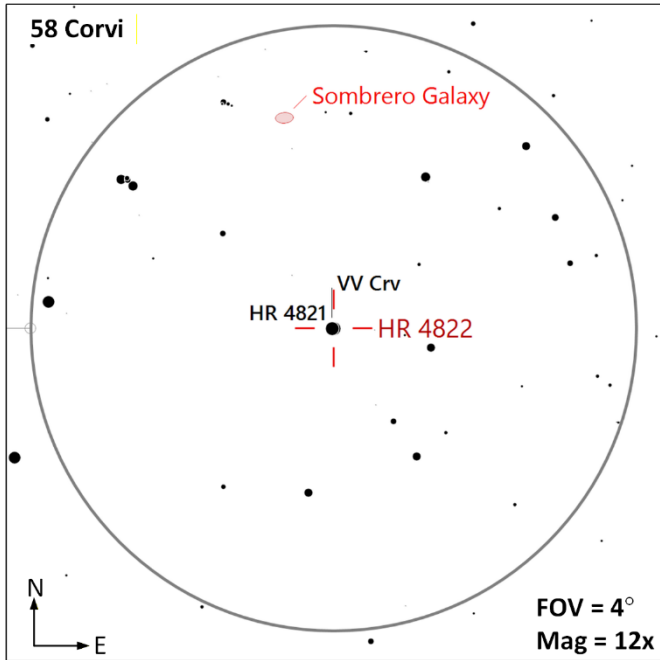
Object (Type)	Ref	Aliases	Stats
HD 109556 (DS)	1	SAO-109556, HIP 61466, HD 109556, STF-1659	AB M=7.9, 8.3 Sep=28" PA=351° MC=G0
ADS-8573 (MS-4)	1	SAO-157326, HIP 60994, HR 4758, HD 108799, Burnham 28, BU 28	AB M=6.5, 9.6 Sep=2.1" PA=351° MC=F9V AC M=6.5, 10.6 Sep=71" PA=303° AD M=6.5, 11.6 Sep=71" PA=166°
Algorab (DS)	1 , 2	SAO-157323, HIP 60965, HR 4757, HD 108767, 7 Crv, Delta Corvi, del Crv, δ Crv, SHJ 145, ADS 8672	AB 2.9, 8.5 Sep=24.2" PA=216° MC=B9.5V, K1
NGC-4361 (PN)	1	ARO 26, PK 294+43.1, PN G294.1+43.6, ESO 573-19, VV 62, Lawn Sprinkler Nebula, Garden Sprinkler Nebula	M=10.9 Size=1.3' x 1.3' SB=20.1
The Antennae (G)	1	Caldwell 60, NGC-4038, PGC 37967 Caldwell 61, NGC-4039, PGC 37969, Ring-tail Galaxy, The Antennae Galaxies	M=10.7 Size=2.6'x2' SB=21.1 MC=SBm

NGC-4782, 4783 (G NGC-4782 | M=11.7 | Size=1.5' | SB=21.2 | MC=E1 || **NGC-4783** | M=11.8 | Size=1.7' | SB=21.6 | MC=E0 |) – Two elliptical galaxies forming a “dumbbell galaxy”. Recent Hubble distance calculations indicate NGC 4782 is 31 million light years farther away than NG-4783 the pair of galaxies have been determined to be an optical pair, and not physically interacting.

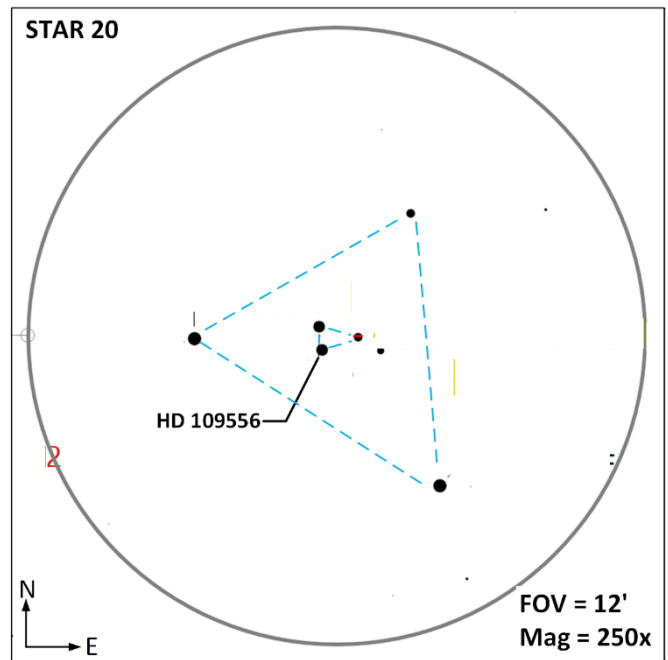
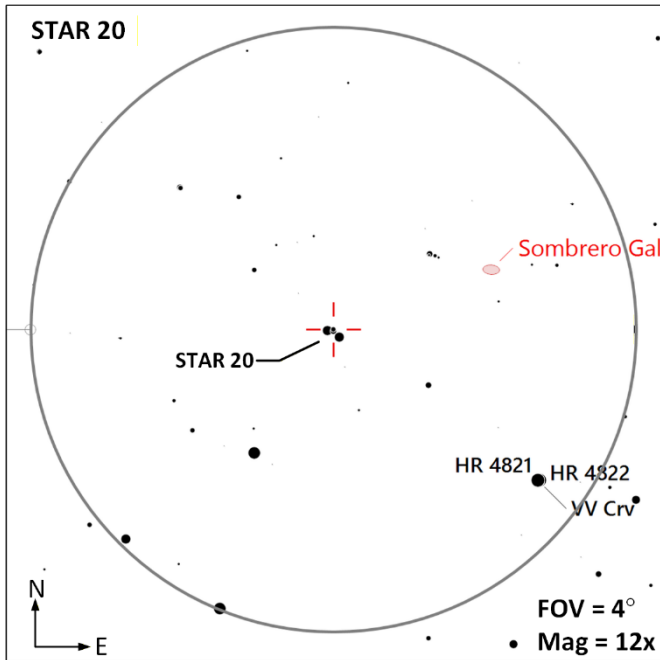


Constellation Guide

58 Corvi (MS-4 AB | M=5.9, 5.9 | Sep=5.3'' | PA=314° | MC=F5V, F5V || AC | M=5.9, 10.3 | Sep=46'' | PA=228° | MC=F3Vn || AD | M=5.9, 10.3 | Sep=59'' | PA=229° | MC= F3Vn |) – Located 257 light years away this in this four component system all components yellow-white.

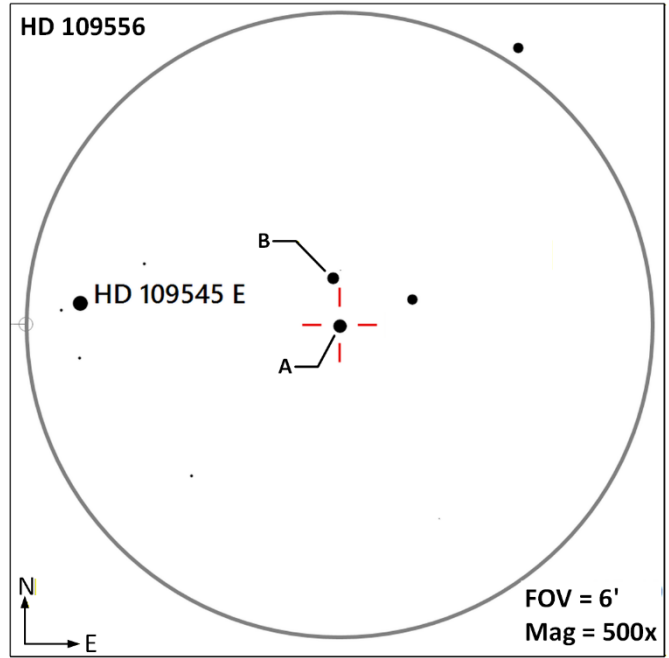
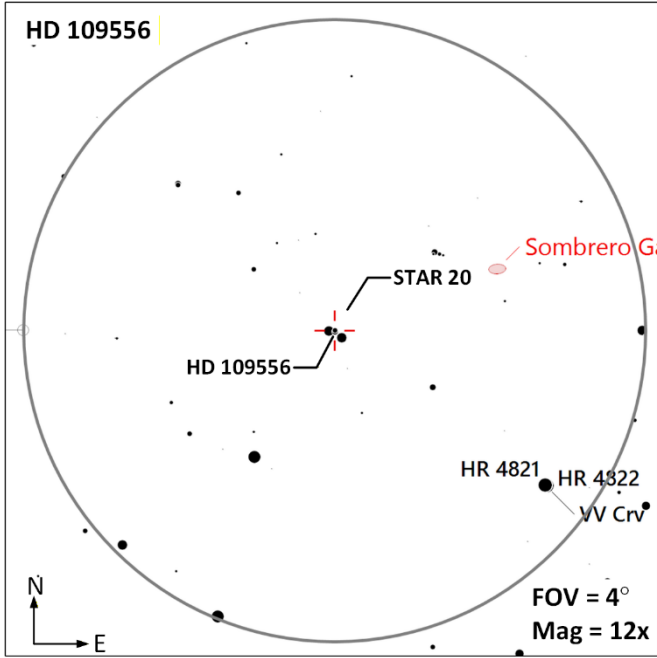


STAR 20 (AS | Stars=6 | Size=15' | Ref Star: STF-1659, SAO-157379, HIP 61449 |) – Stargate, an asterism in the shape of a triangle within a triangle. Best viewed with a telescope. Check out the double star system HD-109556 while you are here.

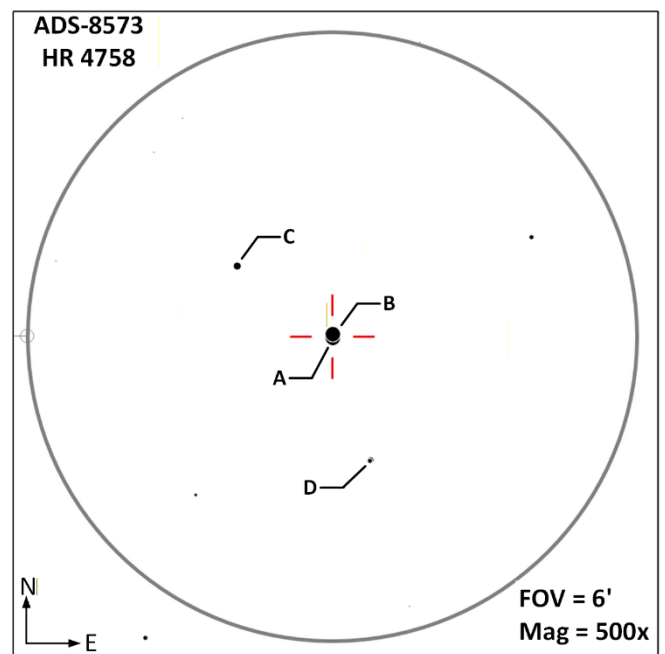
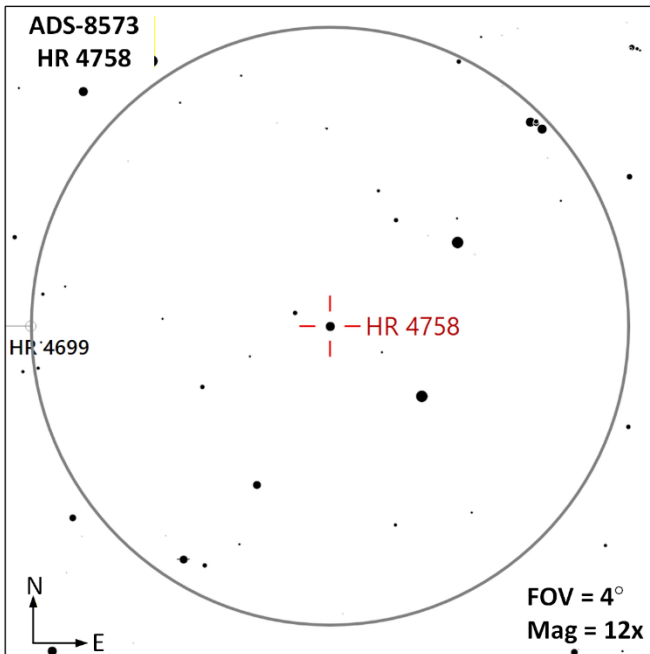


Constellation Guide

HD-109556 ((DS AB | M=7.9, 8.3 | Sep=28" | PA=351° | MC=G0) – A binocular and telescope double this is one of the corner stars of STAR 20 (Stargate). Located 596 light years away containing a yellow-orange giant.

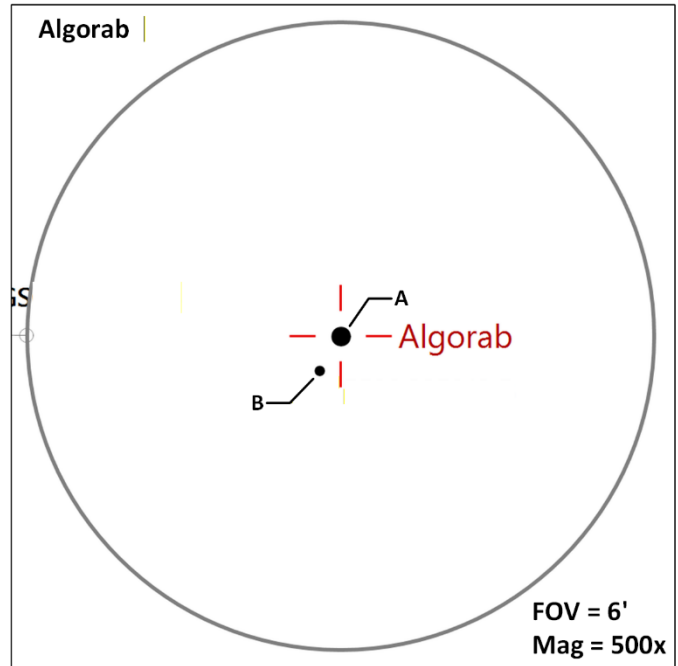
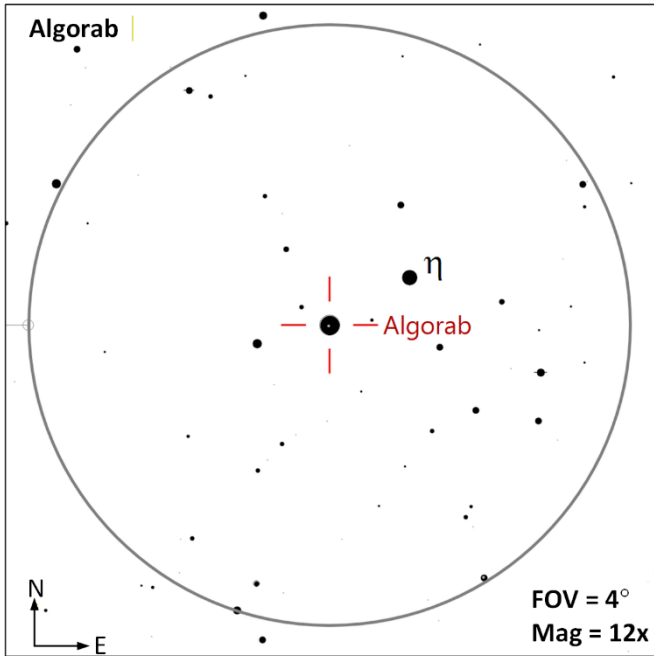


ADS 8573 (MS-4 AB | M=6.5, 9.6 | Sep=2.1" | PA=351° | MC=F9V || AC | M=6.5, 10.6 | Sep=71" | PA=303° || AD | M=6.5, 11.6 | Sep=71" | PA=166°) – Located 80 light years away, the AB components are confirmed physically associated with each other with an orbital period of about 80 years. It has not been determined if the C & D components are physically associated with the AB pair.

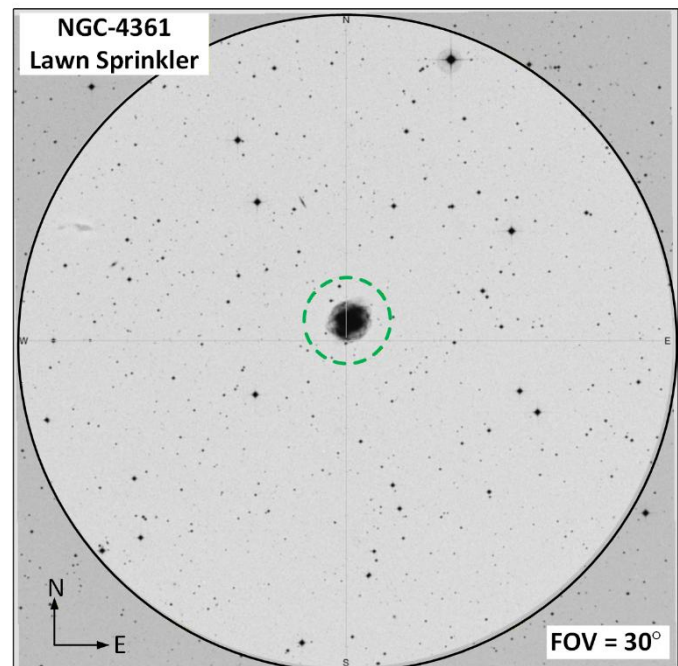
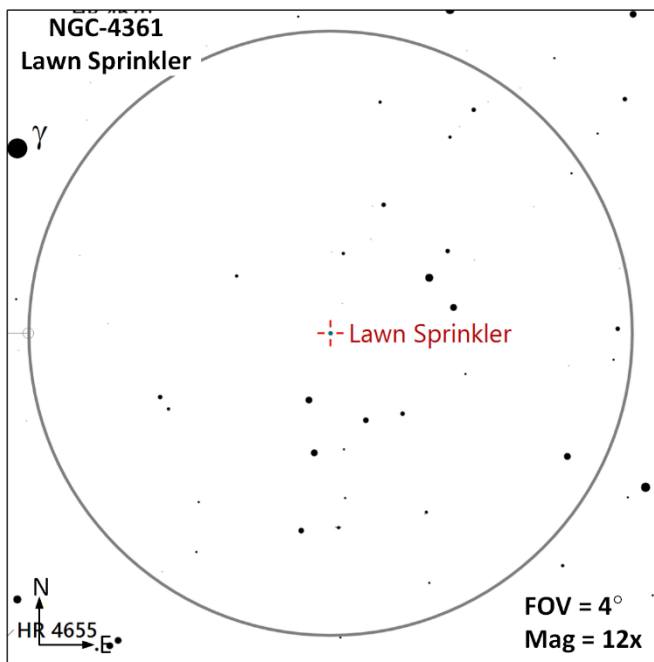


Constellation Guide

Algorab (DS AB | 2.9, 8.5 | Sep=24.2" | PA=216° | MC=B9.5V, K1 |) – Located 87 ly away, both components have the same [common proper motion](#) but due to their great difference in age there has been some doubt as to if these two components are physically associated with each other. Color descriptions of this pair are as “yellowish and pale lilac”.

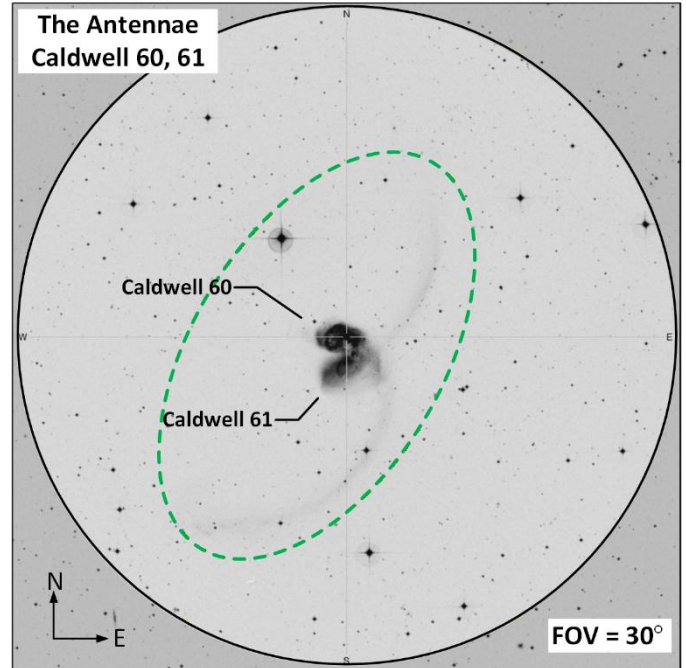
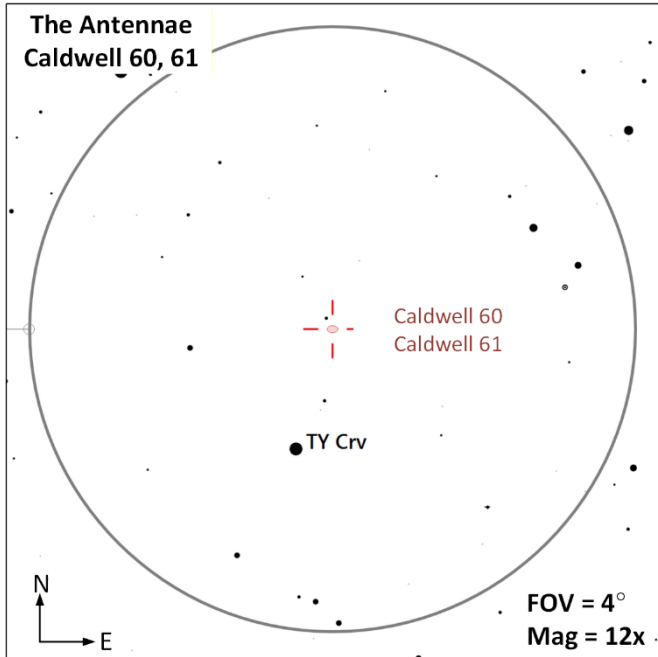


NGC-4361 (PN | M=10.9 | Size=1.3' x 1.3' | SB=20.1 |) – in a 6" telescope this object should be obvious at 50x taking on the appearance of a telescopic comet with no tail. This is a quadrupolar planetary and has two axes of symmetry, a rarity for planetary nebulas.



Constellation Guide

The Antennae (G | M=10.7 | Size=2.6'x2' | SB=21.1 | MC=SBm |) – Two colliding galaxies, NGC-4038 & NGC-4039 (Caldwell 60, 61) make an interesting view. Both galaxies are undergoing a [starburst](#) phase and a relatively young collection of massive globular clusters due to their interaction. Both galaxies are roughly 70 million light years away.



Blank

Constellation Guide

Observation Log: Corvus (Crv)

Equipment Config A: _____ **Config B:** _____

Notes: _____

Date	Time	Config	Target	Notes

Date	Time	Config	Target	Notes

Constellation Guide
Observation Log: Corvus (Crv)

Equipment Config A: _____ **Config B:** _____

Notes: _____

Date	Time	Config	Target	Notes

Date	Time	Config	Target	Notes

Constellation Guide

References, Resources and Tools used to create this document

The resources listed below were utilized to generate this document.

References

- Books
 - [Objects in the Heavens](#): Peter Birren
 - [Touring the Universe through Binoculars](#): Philip Harrington
 - [The Deep Sky](#): Philip Harrington
 - [Double and Multiple Stars and How to Observe Them](#): James Mullaney
 - Celestial Portraits: [Tom Polakis](#)
 - [Sky Spot](#) Books
 - Bright Telescopic Objects: Brent Watson
 - Select Double Stars: Brent Watson
 - Overlooked Objects: Bret Watson
- Asterisms
 - Astronomical League: [Asterisms observing program](#) List
 - Asterisms: Demeiza Ramakers
 - [Pattern Asterisms](#): John Chiravalle
 - Milwaukee Astronomical Society: [Binocular Asterisms](#)
 - Deep-Sky.co.uk: [Observing Asterisms](#) (David Ratlege)
- [Saguaro Astronomy Club](#)
 - Asterisms List
 - [110 Best of the NGC](#)
 - Red Stars List
- Online
 - [Wikipedia](#)
 - The Garden Astronomer: [Double, Multiple, and Special Star Observations List](#)
 - Sky & Telescope: [Colored Double Stars, Real and Imagined](#)
 - [In-The-Sky.org](#)
 - [Constellation-guide.com](#)

Applications

- [SkyTools](#) 4.1 Visual Professional
- [AstroPlanner](#) Version 2.4
- [Cartes du Ciel](#) Version 4.3
- [Sky Safari](#) Pro 7
- Microsoft Office Home and business 2021 - Word
- Microsoft Visio Professional 2021
- [IrfanView](#) Version 4.72