

Constellation Guide

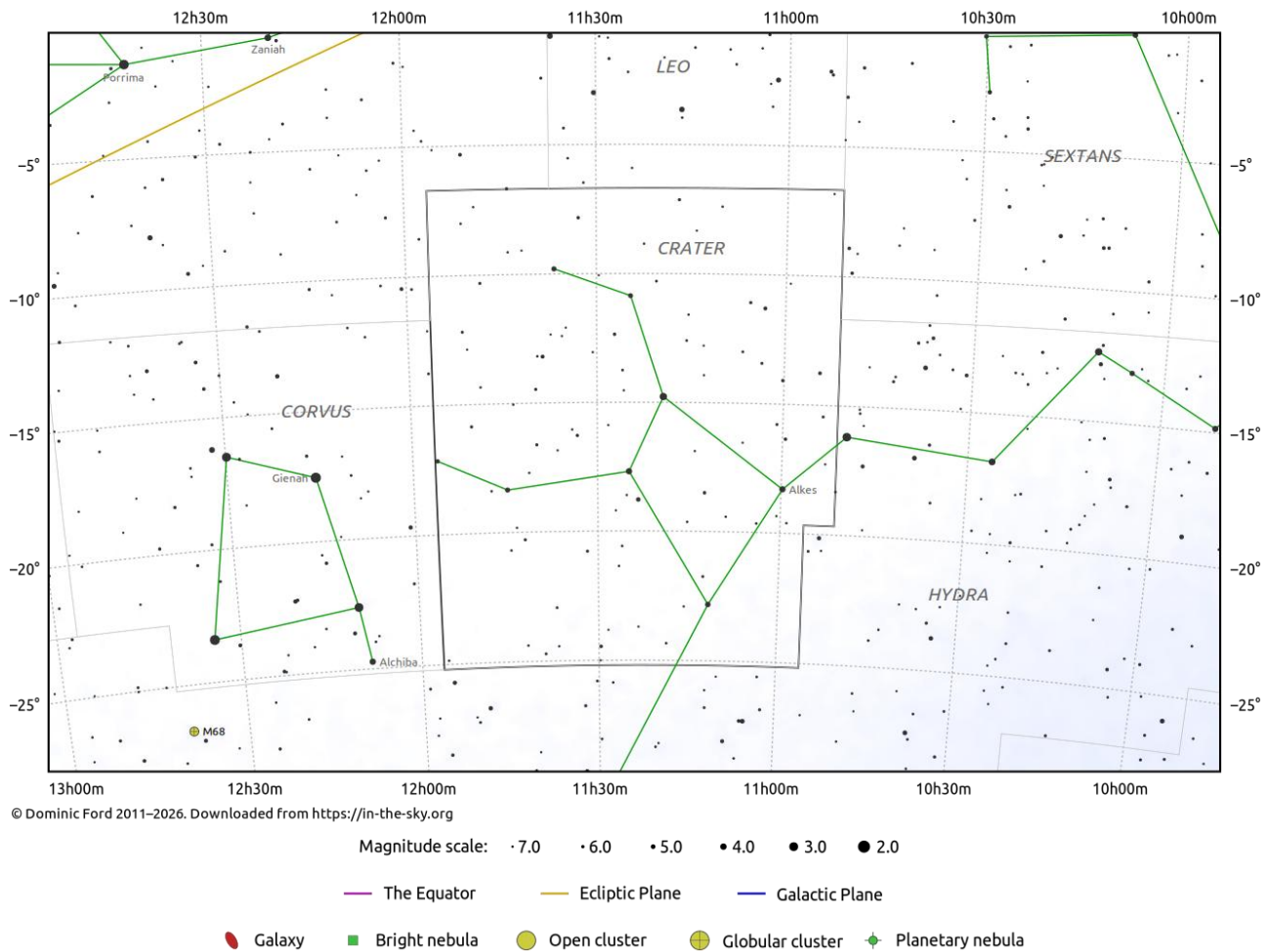
Crater (Crt)

Evening Visibility: **February - April**

Online Information: [Crater](#)

More Online Information: [NGC-3887](#), ADS-8183, 15 Crateris, [NGC-3672](#), STF-1530, [NGC-3511](#), [NGC-3513](#)

[In-The-Sky.org](#) Constellation Map



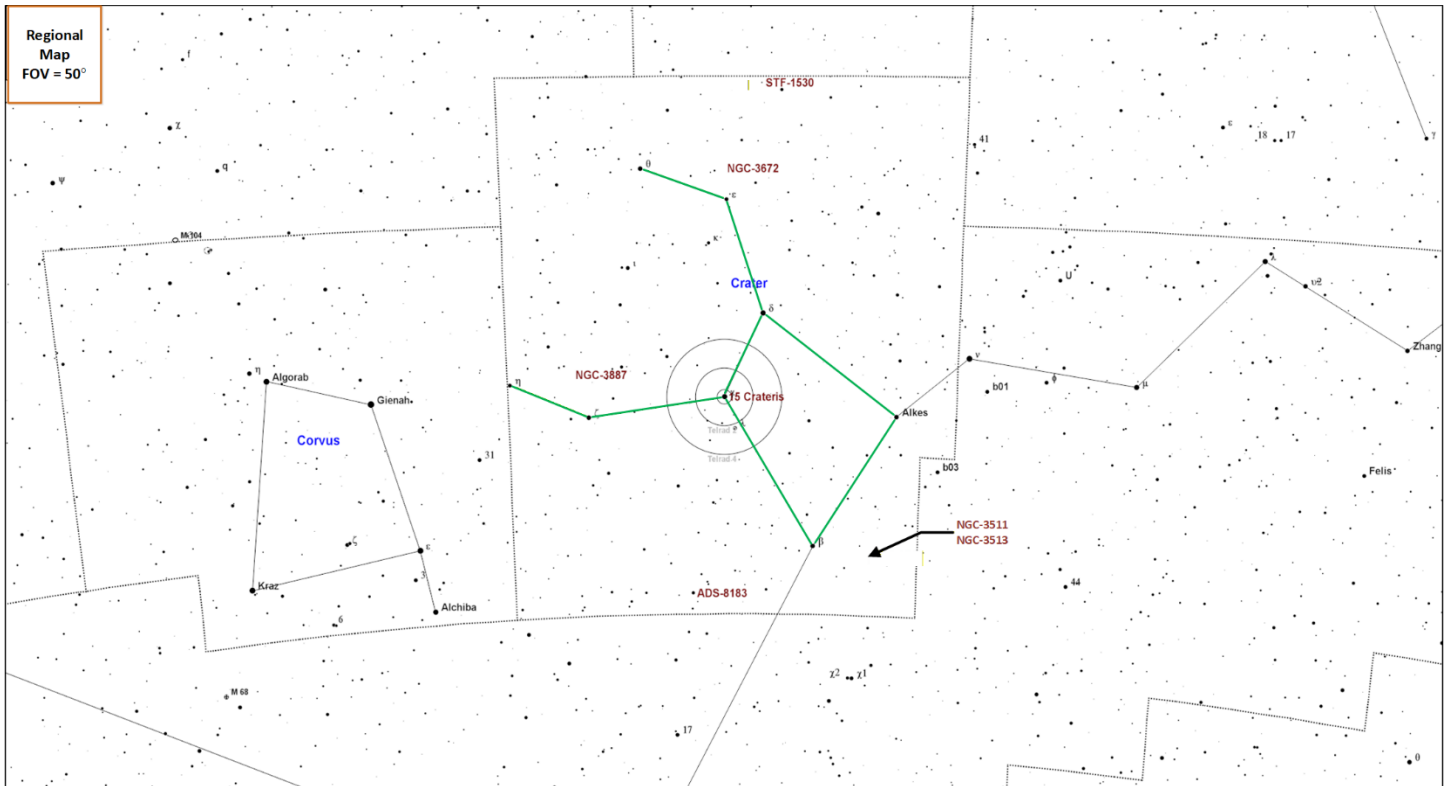
Crater the cup represents the cup of the Greek god Apollo. The story of this cup is that Corvus the crow was tasked to bring the cup filled with water to Apollo to drink, was distracted by a fig tree, and as a result was delayed and so returned with the water snake Hydra in his talons, telling Apollo that Hydra had prevented him from filling the cup. Apollo saw through this story and threw all three, Hydra, Crater and Corvus into the heavens. Crater the constellation was catalogued by the Greek astronomer Ptolemy in the 2nd century. Crater can be seen at latitudes between +65° and -90.

Constellation Guide

Constellation Highlights

- **NGC-3511 & NGC-3513 (G)** – Two galaxies in the same field of view.
- **15 Crateris (DS)** – Double star system, Gamma Crateris.

Constellation Targets Map

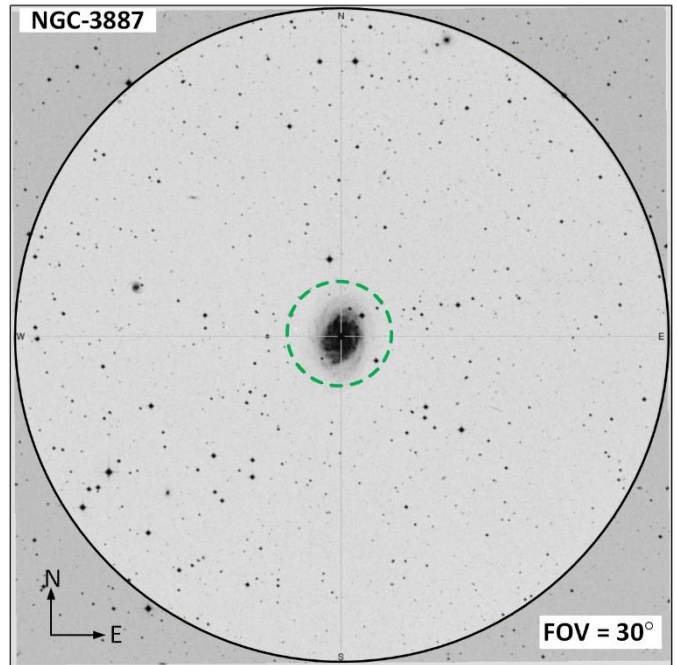
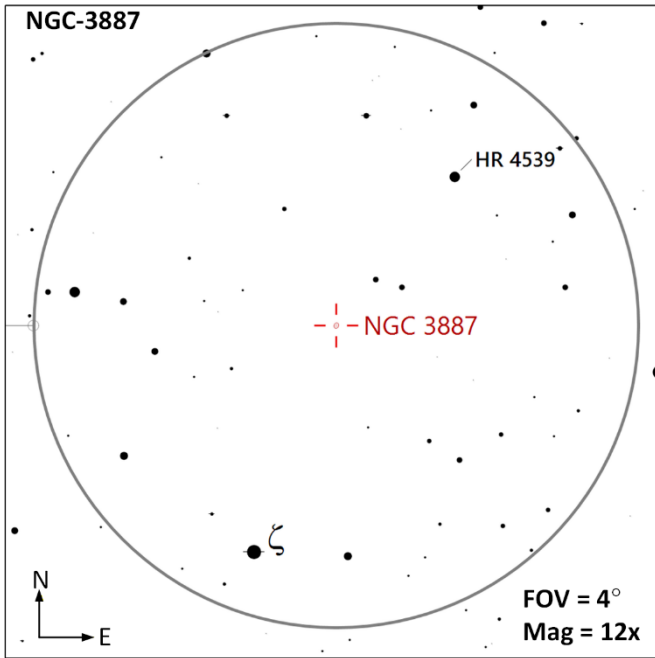


Region Objects Summary

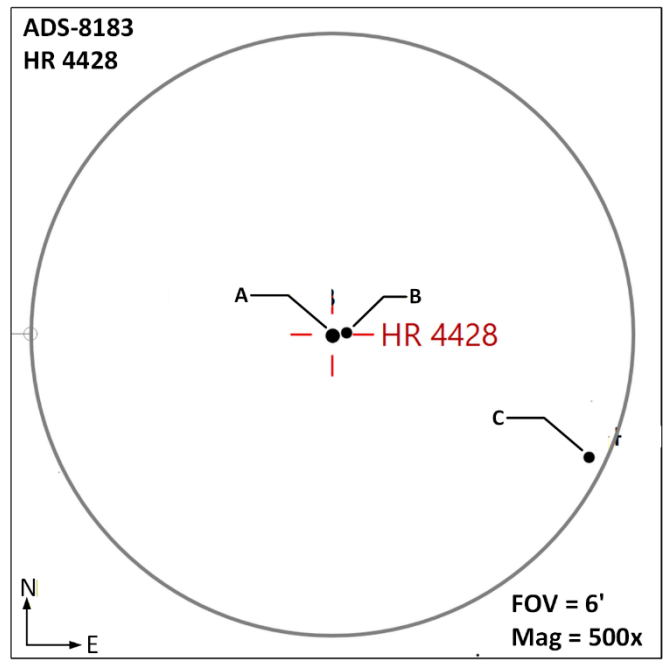
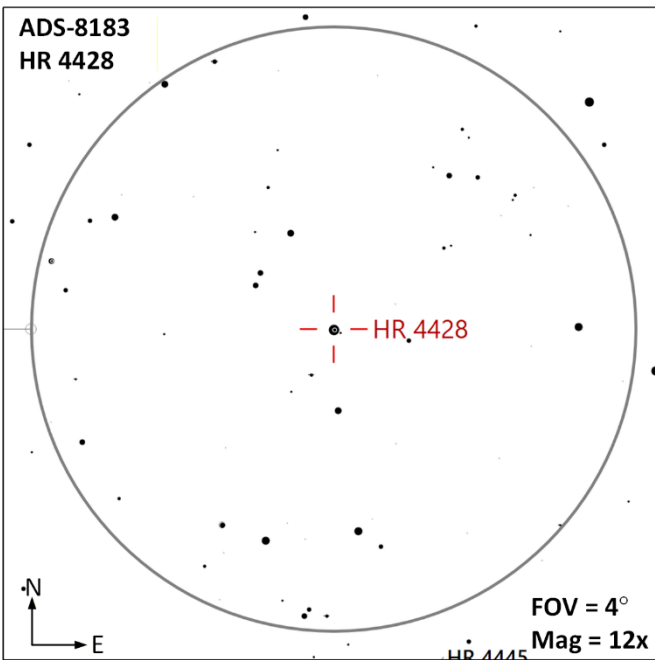
Object (Type)	Ref	Aliases	Stats
NGC-3887 (G)	1	UGCA 246, PGC 36754, MCG -3-30-12	M=10.6 Size=3.3' x 2.5' SB=21.5 MC=SBbc
ADS 8183 (MS-3)	1	SAO-179935, HIP 56078, HR 4428, HD 99922, JC 16	AB M=5.8, 8.6 Sep=8.2" PA=82° MC=A0V AC M=5.8, 8.9 Sep=166" PA=112° MC=F3/5V
15 Crateris (DS)	1	SAO-156661, HIP 55705, HR 4405, HD 99211, HJ 840, ADS 8153, Gamma Crateris, γ Crt	AB M=4.1, 7.9 Sep=4.35" PA=92.4° MC=A7V
NGC-3672 (G)	1	UGCA 235, PGC 35088, MCG-2-29-28	M=11.4 Size=4.2' x 1.9' SB=22.3 MC=Sc
STF-1530 (DS)	1	SAO-138135, HIP 55322, HD 98489, ADS 8134	AB M=8.6, 8.9 Sep=7.6" PA=313° MC=F2
NGC-3511 (G)	1	UGCA 223, PGC 33385, MCG -4-26-20	M=10.8 Size=5.8' x 2.0' SB=22.1 MC=SBc
NGC-3513 (G)	1	UGCA 224, PGC 33410, MCG-4-26-21, ESO 502-14	M=11.1 Size= 2.8' x 2.2' SB=21.7 MC=SBb

Constellation Guide

NGC-3887 (G | M=10.6 | Size=3.3' x 2.5' | SB=21.5 | MC=SBbc) |) – This galaxy is located 55 million light years away and has a diameter of 60,000 light years. This is a barred spiral galaxy with a spiral arm emerging from each end of the central bar.

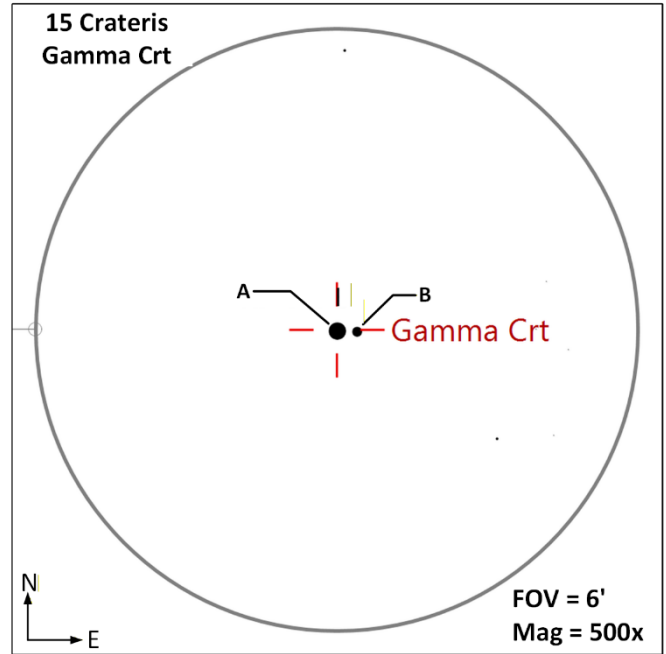
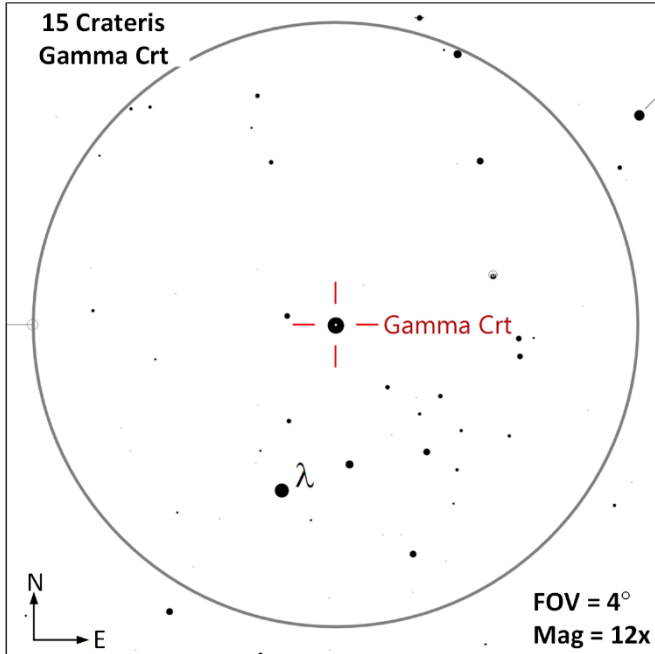


ADS 8183 (MS-3 AB | M=5.8, 8.6 | Sep=8.2" | PA=82° | MC=A0V || AC | M=5.8, 8.9 | Sep=166" | PA=112° | MC=F3/5V) |) – Located about 450 ly away, it is uncertain if the AB components are physically associated, however, the AC components are physically associated.

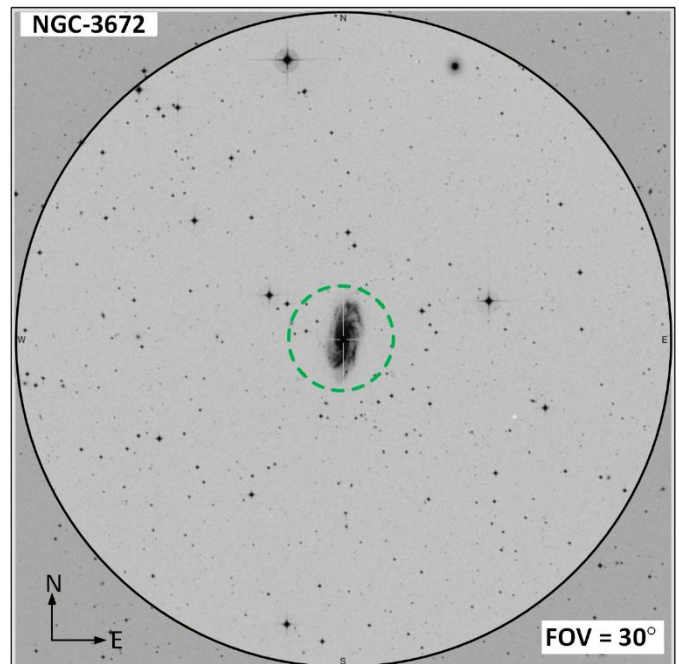
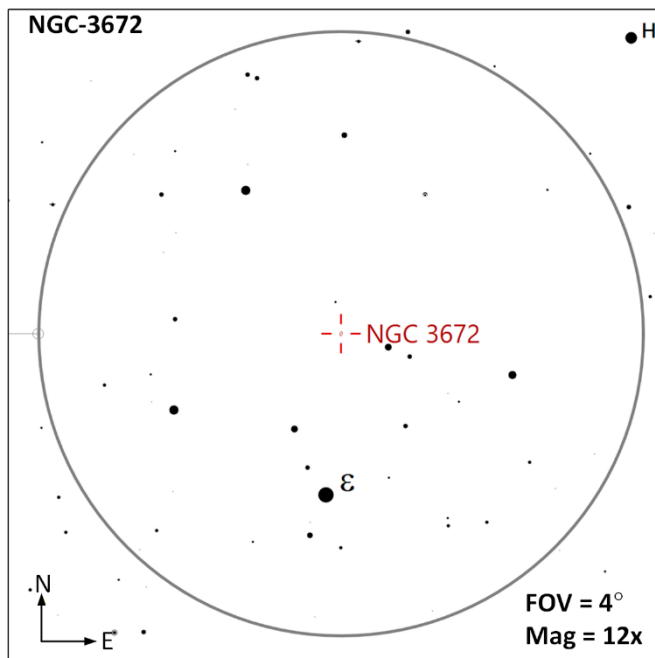


Constellation Guide

15 Crateris (DS | M=4.1, 7.9 | Sep=4.35" | PA=924.4° | MC=A7V |) – This double star system is located 82 light years from earth. One description of this pair describes it at a white and blue pair.

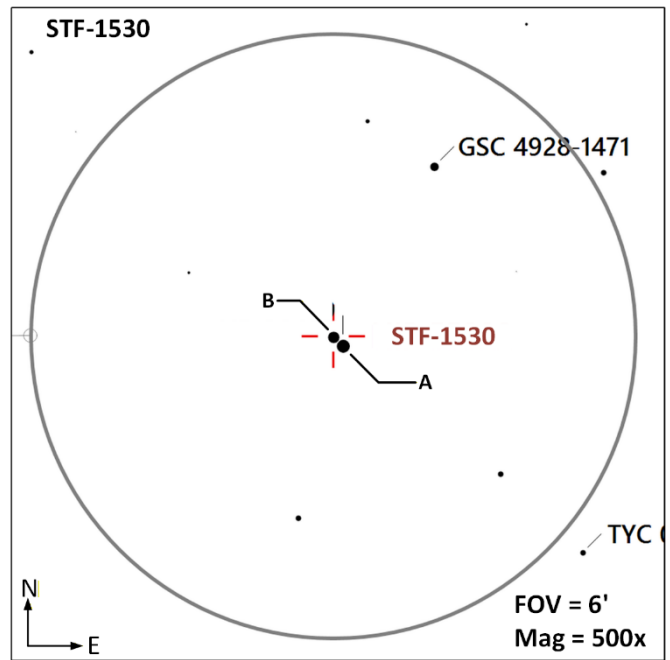
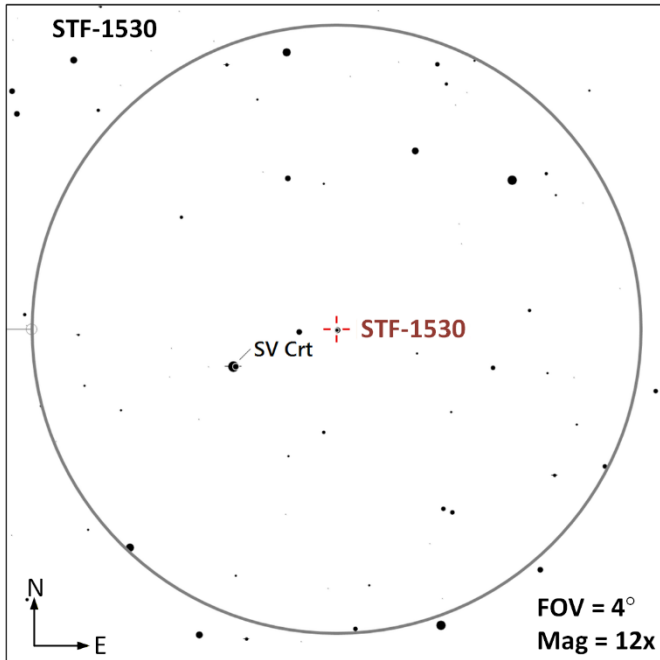


NGC-3672 (G | M=11.4 | Size=4.2' x 1.9' | SB=22.3 | MC=Sc |) – An unbarred spiral galaxy located 80 million light years away with a diameter of approximately 100,000 ly. This galaxy is estimated to have a mass of 200 million solar masses.

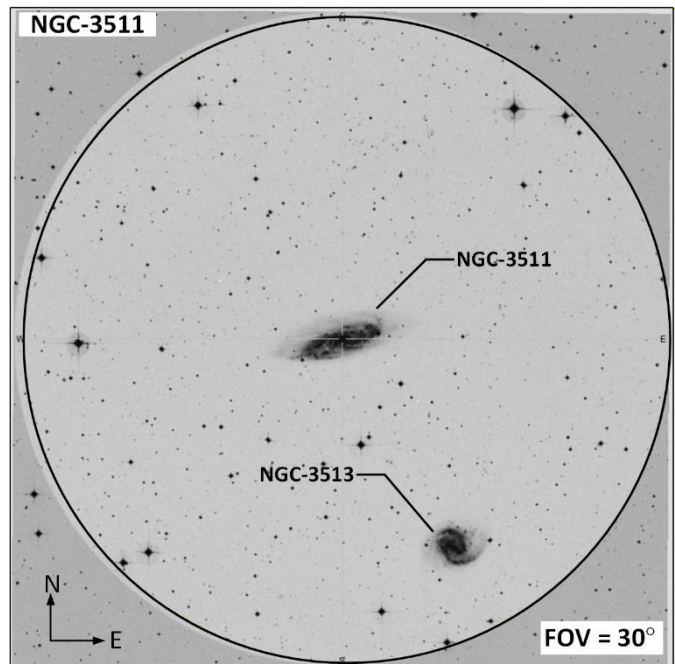
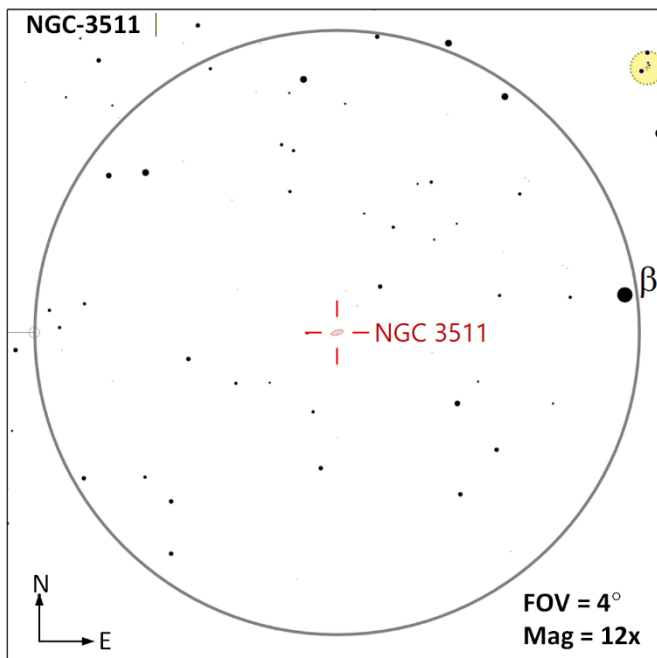


Constellation Guide

STF-1530 (DS AB AB | M=8.6, 8.9 | Sep=7.6" | PA=313° | MC=F2 |) – This double star system is located 635 ly away. The secondary is 1,479 AU from its primary. The pair form a pale yellow/pale blue pair.

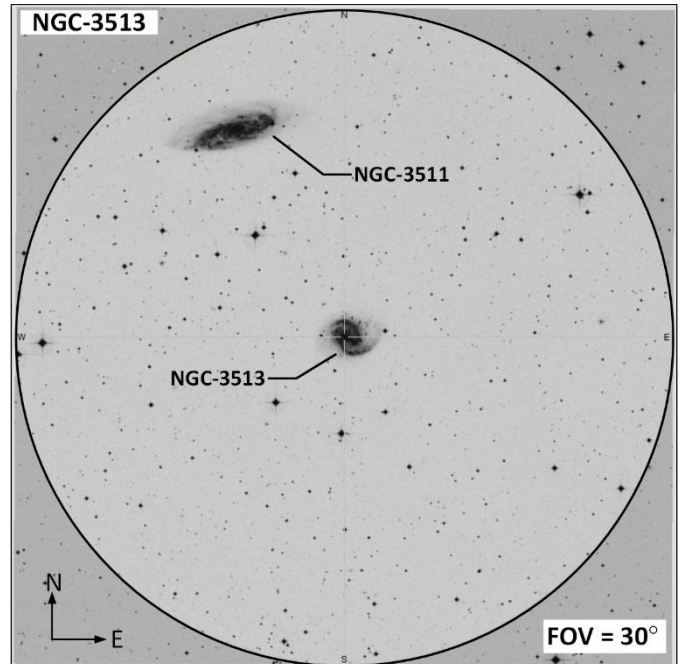
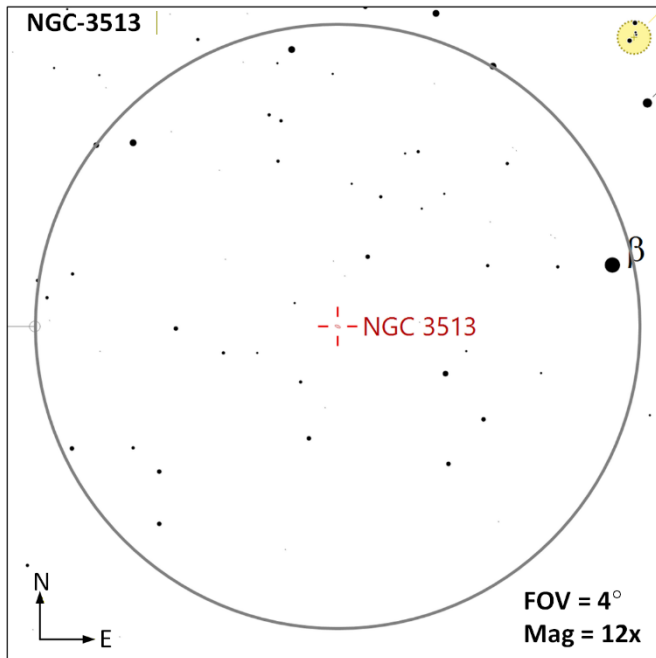


NGC-3511 (G | M=10.8 | Size=5.8' x 2.0' | SB=22.1 | MC=SBc |) – Located 41 million light years away and measuring 107,000 ly across. This is the main galaxy of a trio of galaxies making up the NGC-351 group that include NGC-3511, NGC 3513 (located 10.5' away and in the same field of view) and ESO 502-024.



Constellation Guide

NGC-3513 (G | M=11.1 | Size= 2.8' x 2.2' | SB=21.7 | MC=SBb |) – Located in the same field of view of NGC-3511, this galaxy is located 40 million light years away and has a diameter of about 45,000 ly. This is a barred spiral galaxy with a high surface brightness bar. There is a faint hydrogen bridge connecting NGC-3511 and this galaxy together.



Constellation Guide
Observation Log: Crater (Crt)

Equipment Config A: _____ **Config B:** _____

Notes: _____

Date	Time	Config	Target	Notes

Date	Time	Config	Target	Notes

Constellation Guide
Observation Log: Crater (Crt)

Equipment Config A: _____ **Config B:** _____

Notes: _____

Date	Time	Config	Target	Notes

Date	Time	Config	Target	Notes

Constellation Guide

References, Resources and Tools used to create this document

The resources listed below were utilized to generate this document.

References

- Books
 - [Objects in the Heavens](#): Peter Birren
 - [Touring the Universe through Binoculars](#): Philip Harrington
 - [The Deep Sky](#): Philip Harrington
 - [Double and Multiple Stars and How to Observe Them](#): James Mullaney
 - Celestial Portraits: [Tom Polakis](#)
 - [Sky Spot](#) Books
 - Bright Telescopic Objects: Brent Watson
 - Select Double Stars: Brent Watson
 - Overlooked Objects: Bret Watson
- Asterisms
 - Astronomical League: [Asterisms observing program](#) List
 - Asterisms: Demeiza Ramakers
 - [Pattern Asterisms](#): John Chiravalle
 - Milwaukee Astronomical Society: [Binocular Asterisms](#)
 - Deep-Sky.co.uk: [Observing Asterisms](#) (David Ratlege)
- [Saguaro Astronomy Club](#)
 - Asterisms List
 - [110 Best of the NGC](#)
 - Red Stars List
- Online
 - [Wikipedia](#)
 - The Garden Astronomer: [Double, Multiple, and Special Star Observations List](#)
 - Sky & Telescope: [Colored Double Stars, Real and Imagined](#)
 - [In-The-Sky.org](#)
 - [Constellation-guide.com](#)

Applications

- [SkyTools](#) 4.1 Visual Professional
- [AstroPlanner](#) Version 2.4
- [Cartes du Ciel](#) Version 4.3
- [Sky Safari](#) Pro 7
- Microsoft Office Home and business 2021 - Word
- Microsoft Visio Professional 2021
- [IrfanView](#) Version 4.72